

BUILDING MATERIALS:

Roof ~

Big Six profile cement based sheets. Colour - Anthracite.

Side sheeting ~

Plastic coated steel profile. Colour - Olive Green

Concrete panels ~

Natural colour

Repositioned extraction fans moved

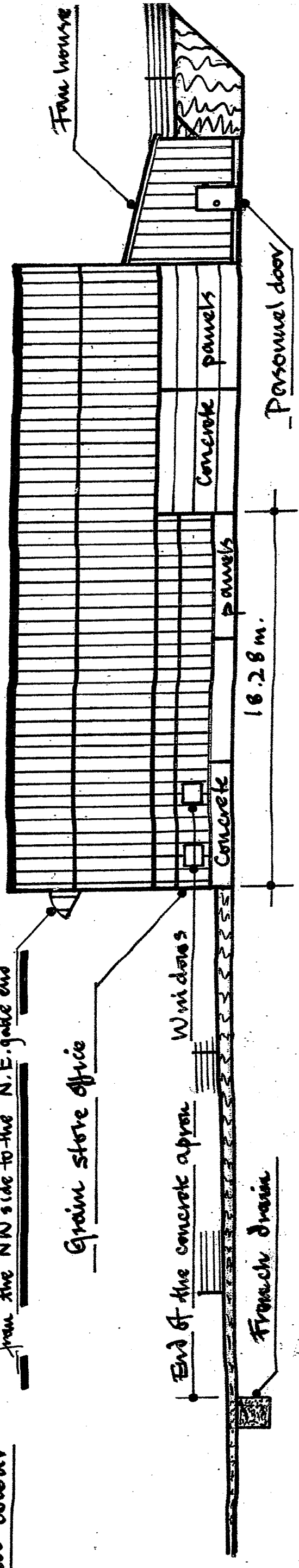
from the NW side to the N.E. gable end

Grain store office

End of the concrete apron

Windows

French drain



SCALE: 1:200

PLAN PREPARED ON A3 PAPER

DATE: 18th November 2020

Plan giving details of the repositioning

of the 2no. extraction fans on the building

for the proposed new grain store adjacent to

Doles Farm, Enham Alouen, Andover, as agreed

with Kenna Taylor, the TVBC Principal Environmental

Health Officer. See her email dated 17.11.2020.

Plan 2 of 2

PLAN PREPARED BY:-

ANDREW WALKER

Tel: 07836 594224

North West Elevation

C. S. Hunt & Son (Enham) Ltd.

Church Cottage.

Knights Enham,

ANDOVER,

Hampshire.

SP10 4DT