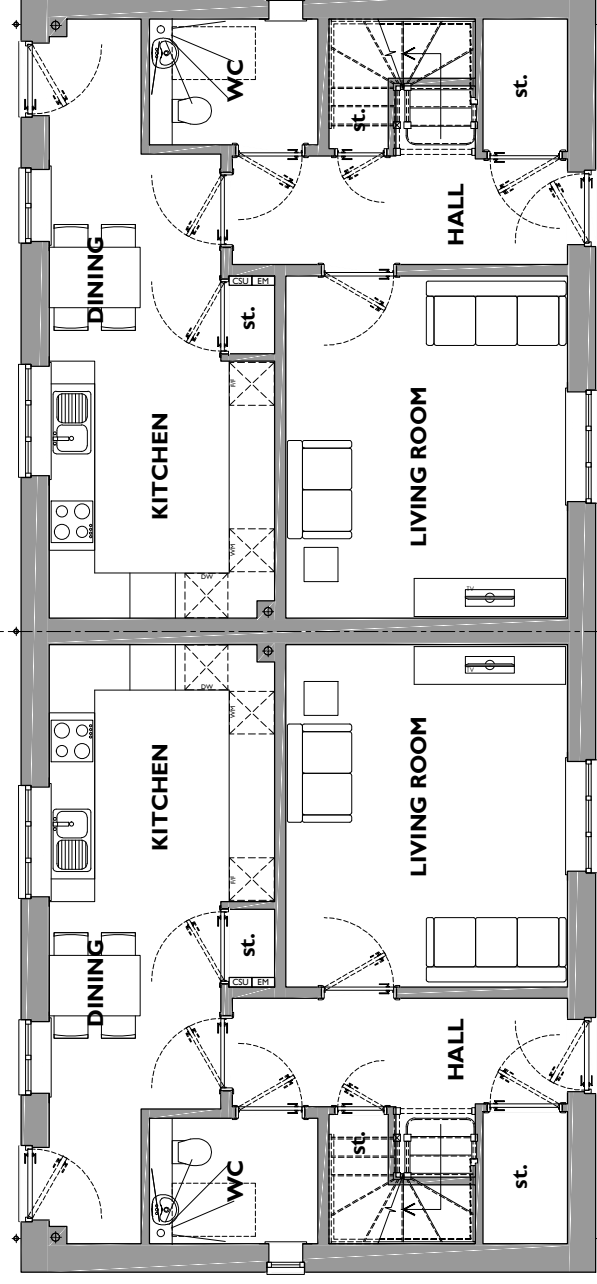


FIRST FLOOR
A5-S88

FIRST FLOOR
A5-S90

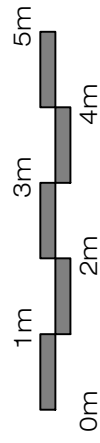


GROUND FLOOR
A5-S89

S221 - 3Bed
Ground Floor = 54.2m²
First Floor = 54.2m²
TOTAL = 108.4m²

GROUND FLOOR
A5-S90

S221-H - 3Bed
Ground Floor = 54.2m²
First Floor = 54.2m²
TOTAL = 108.4m²



Hoe Lane, North Baddesley

Drawing No. A5-S89-A5-S90-P-001 - Ground and First Floor Plans - Rev -
Scale 1:100 at A3 - December 2020