



Rev	Date	Amendment

Drawing Status: Date: Nov. 2020

Ashfield
PARTNERSHIP

MORRISH HOMES
BUILDING QUALITY THROUGH GENERATIONS

Unit 5, Factory Road,
Upton Industrial Estate
Bristol, Avon
BS16 5SL

01202 623420
www.morrishhomes.co.uk

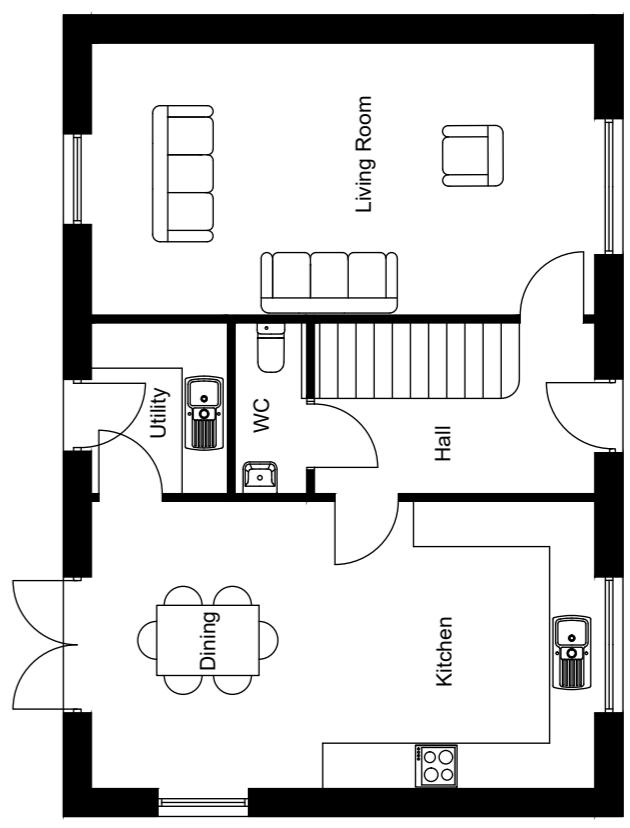
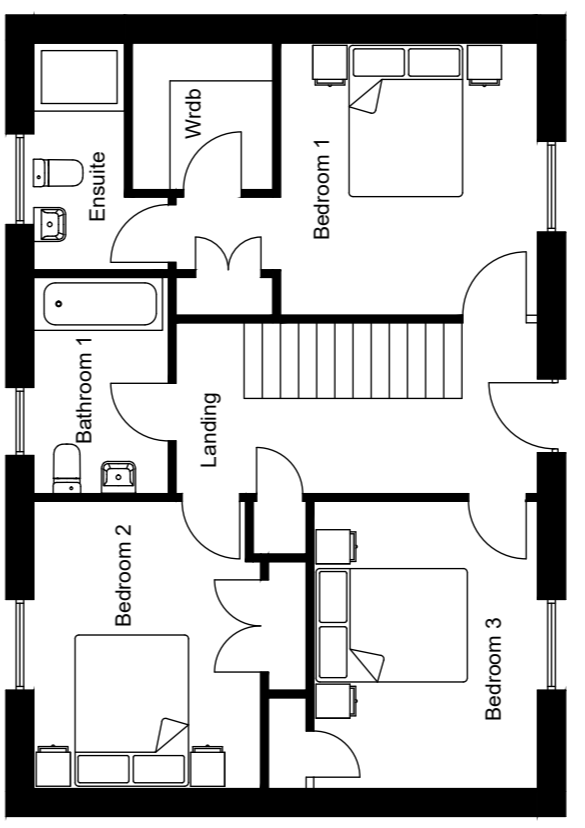
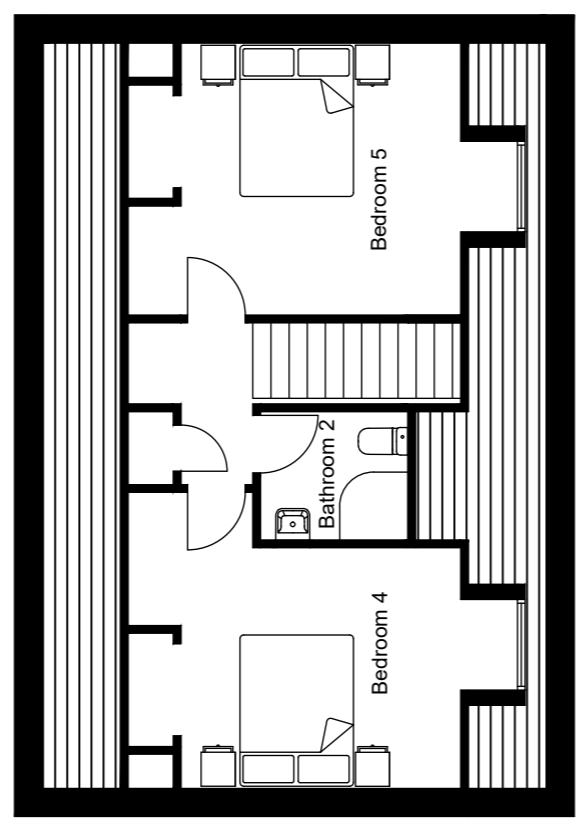
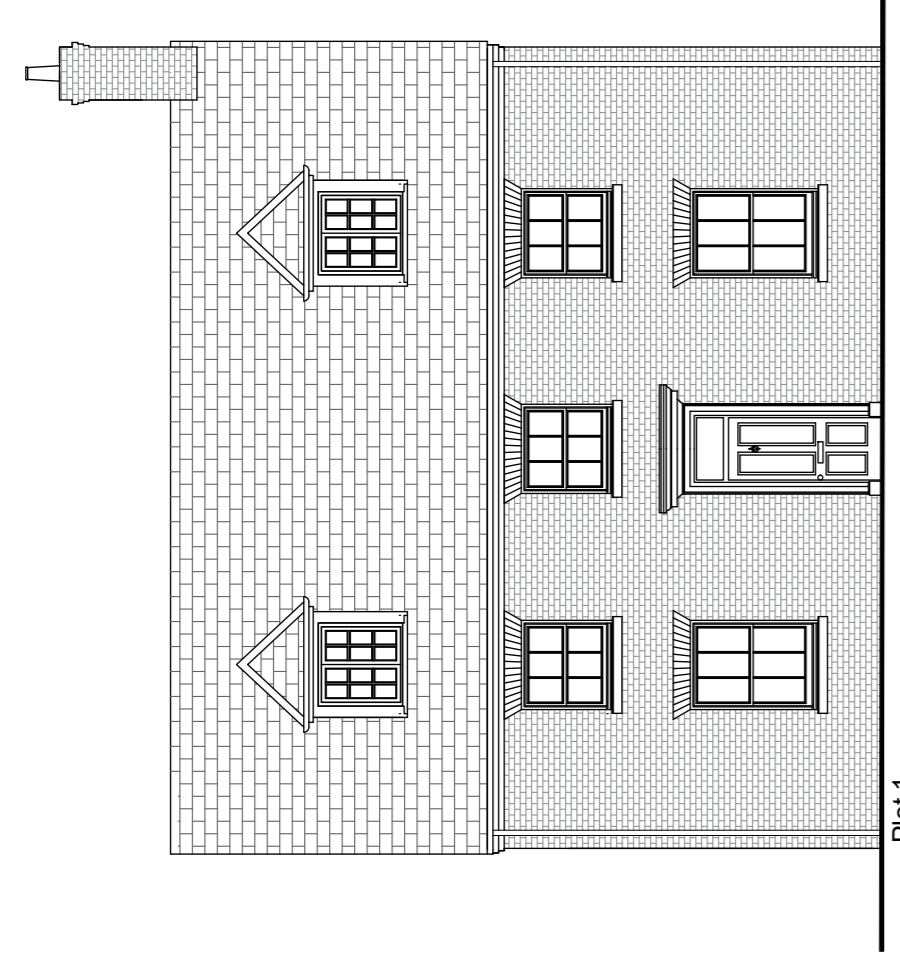
Project title:
**HOE LANE
NORTH BADDESLEY**

Unit no.
Plots 1, 2 & 3

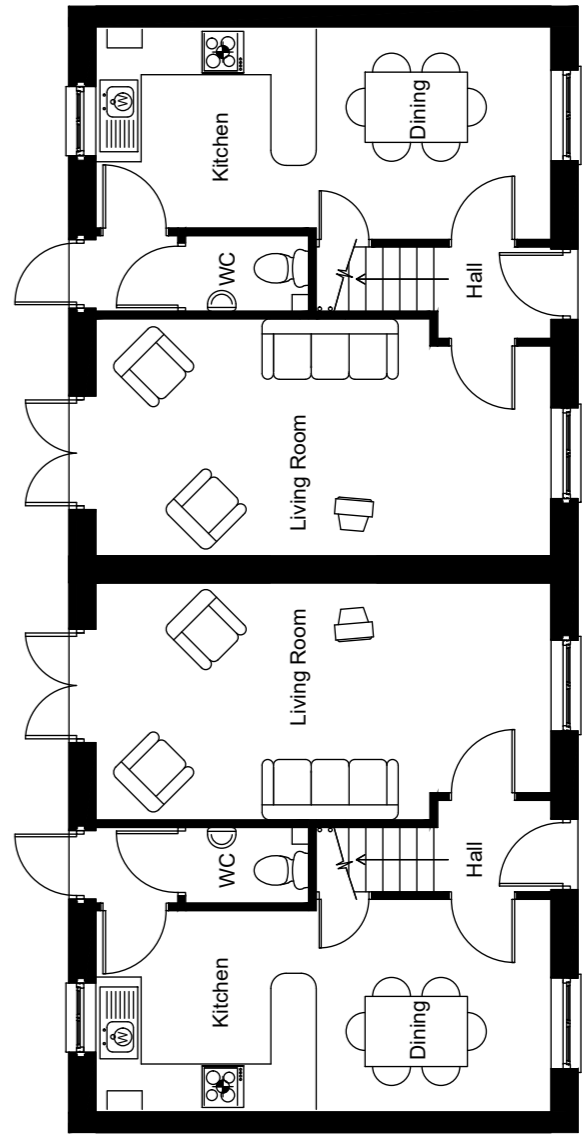
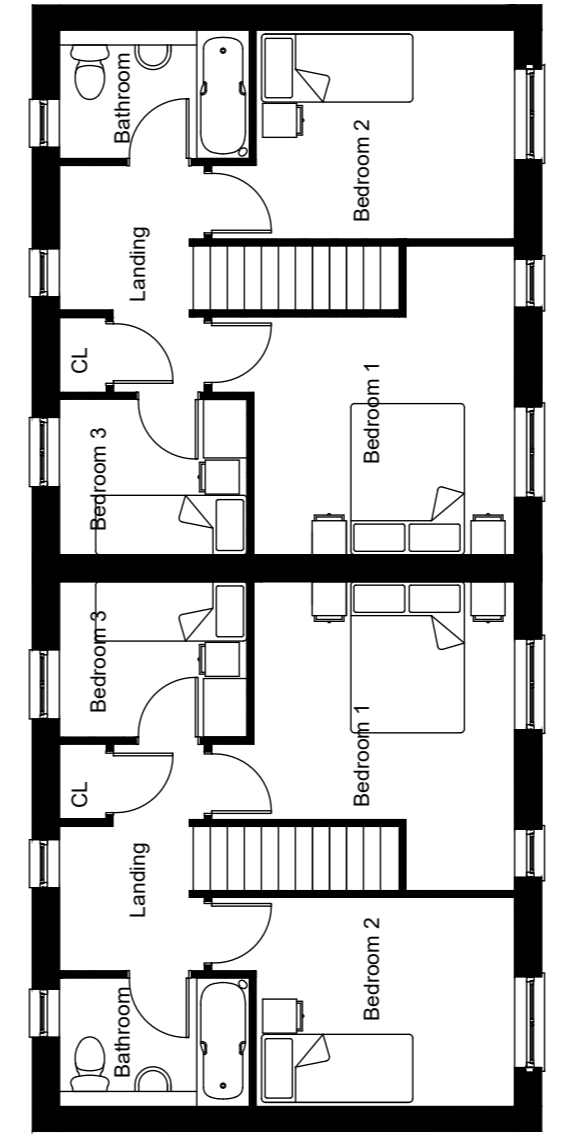
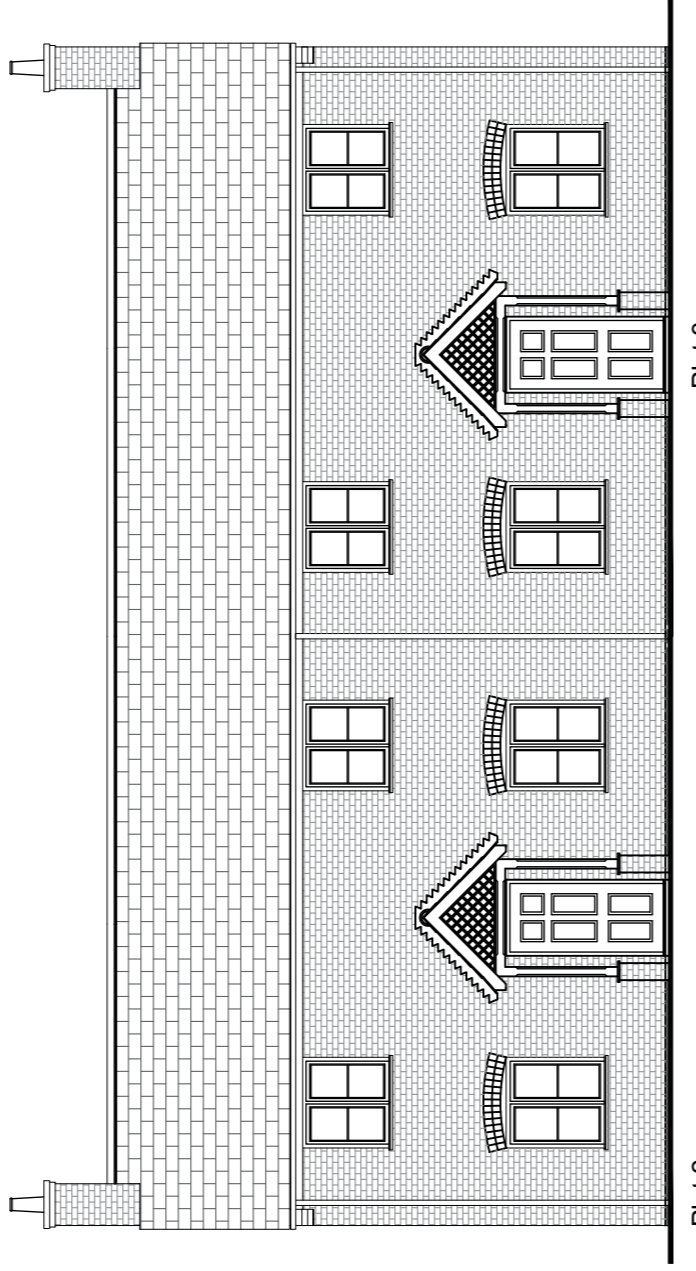
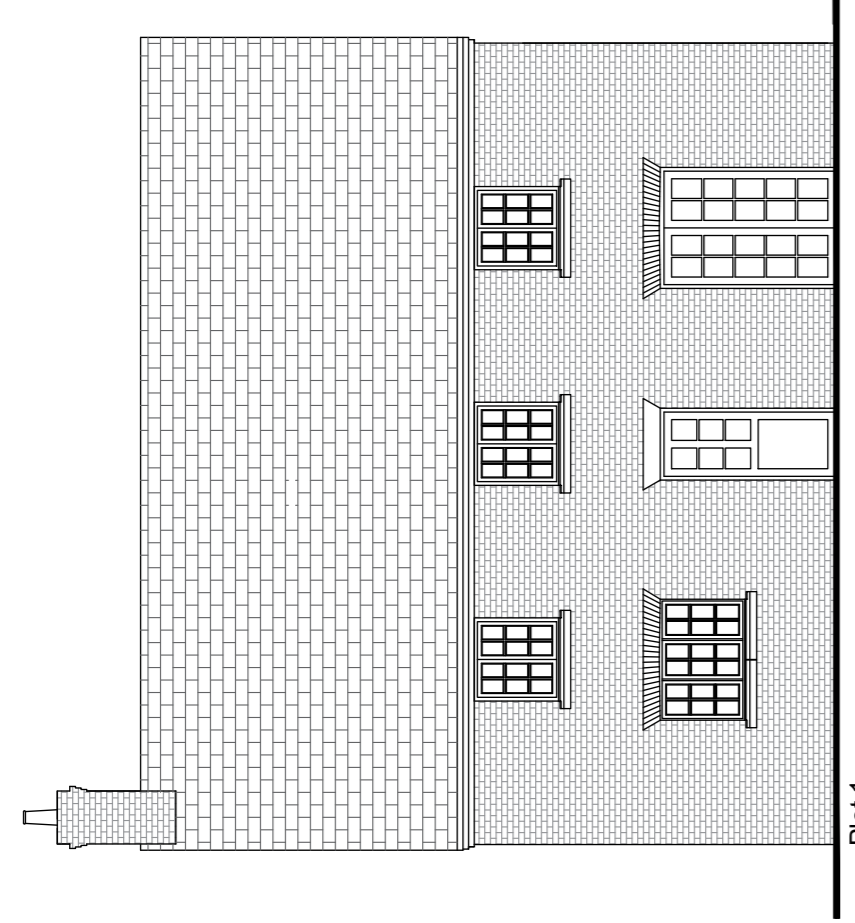
Scale: 1:100 @ A1 Date: DEC 20
Drawn by: AAS Checked by: Drawing title

Plans & Elevations

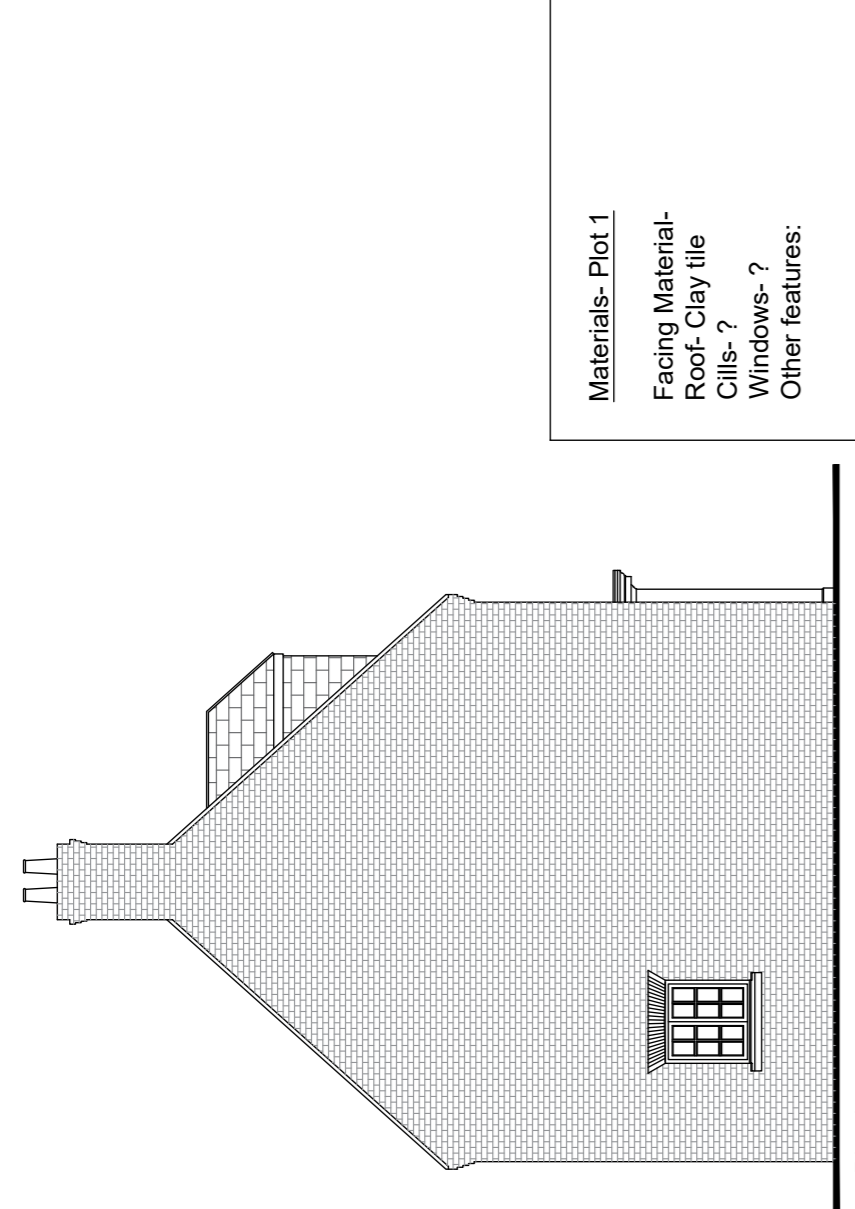
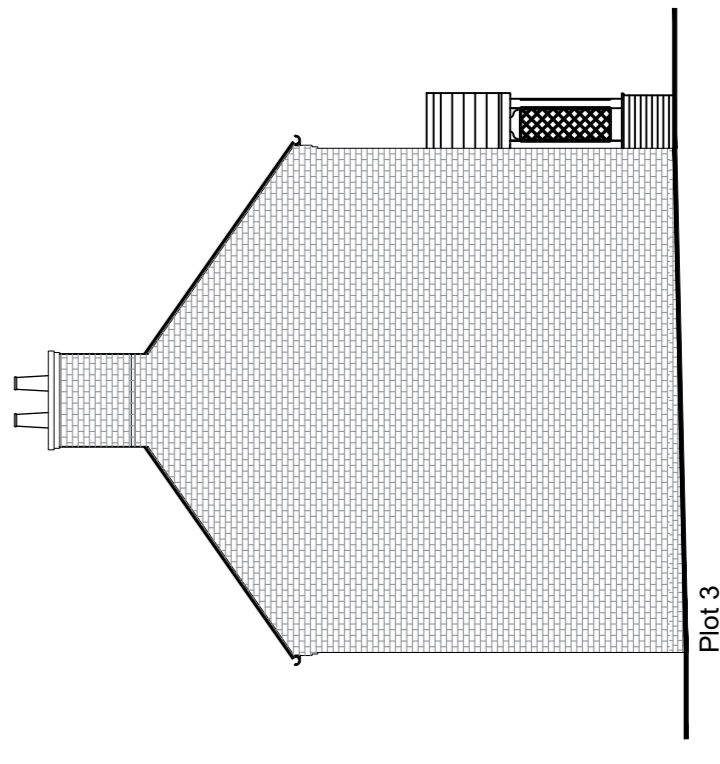
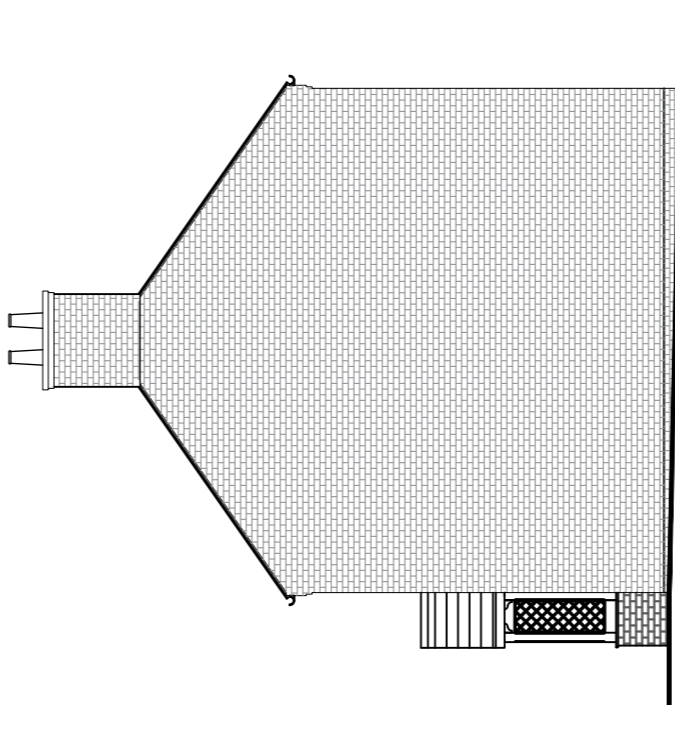
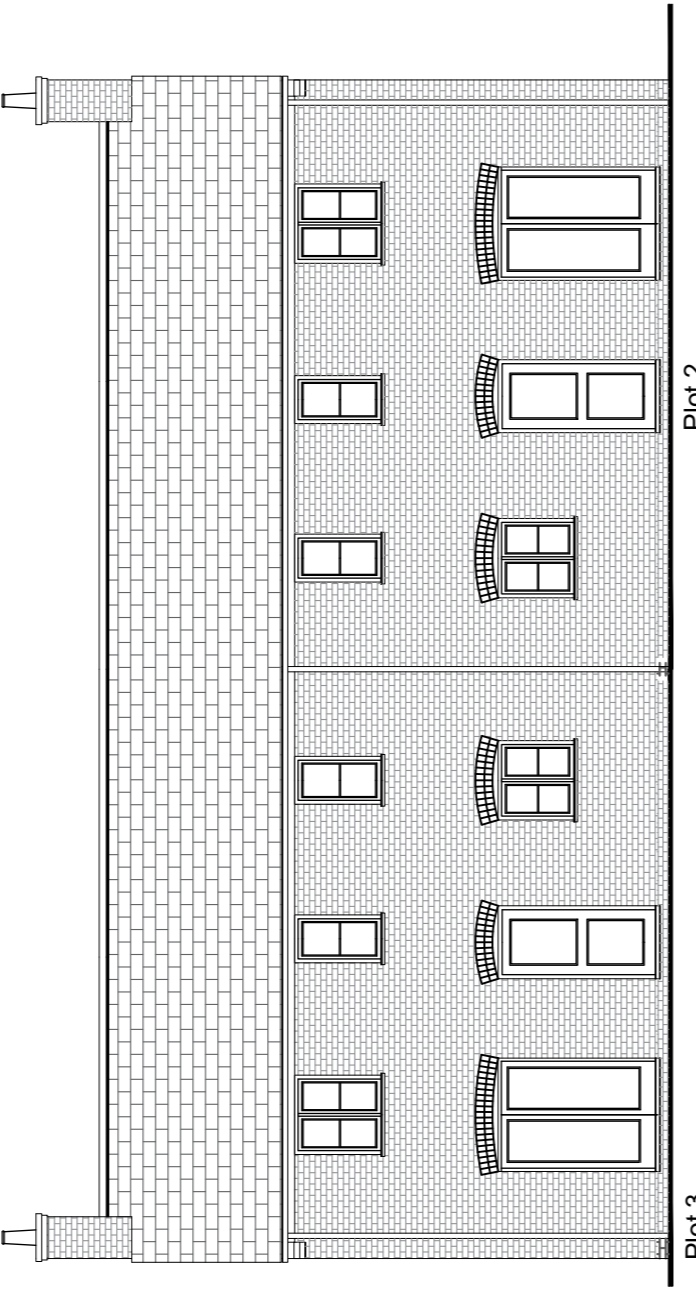
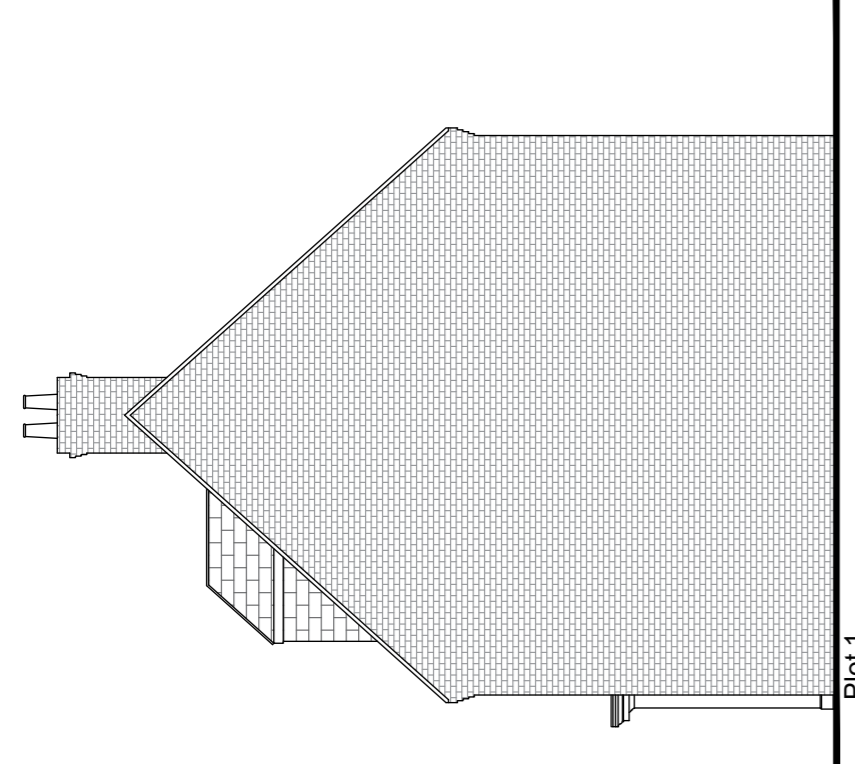
drawing no. **M028/C/1-2-3** rev.



Total Floor Area = 174.4m² / 1877ft²



Total Floor Area = 84.26m² / 947ft²



Materials- Plot 1
Facing Material-
Red's Clay tile
Cills- ?
Windows- ?
Other features:

Materials- Plot 2,3
Facing Material- brick
Roof- slate
Cills- ?
Windows- ?
Other features: timber lattice porch