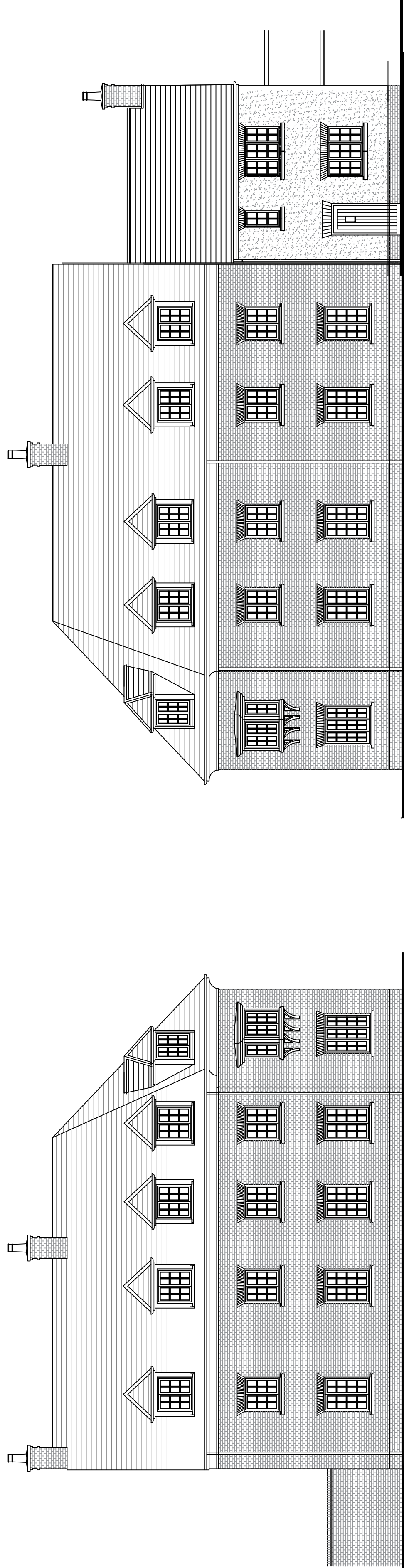


Rev	Date	Amendment

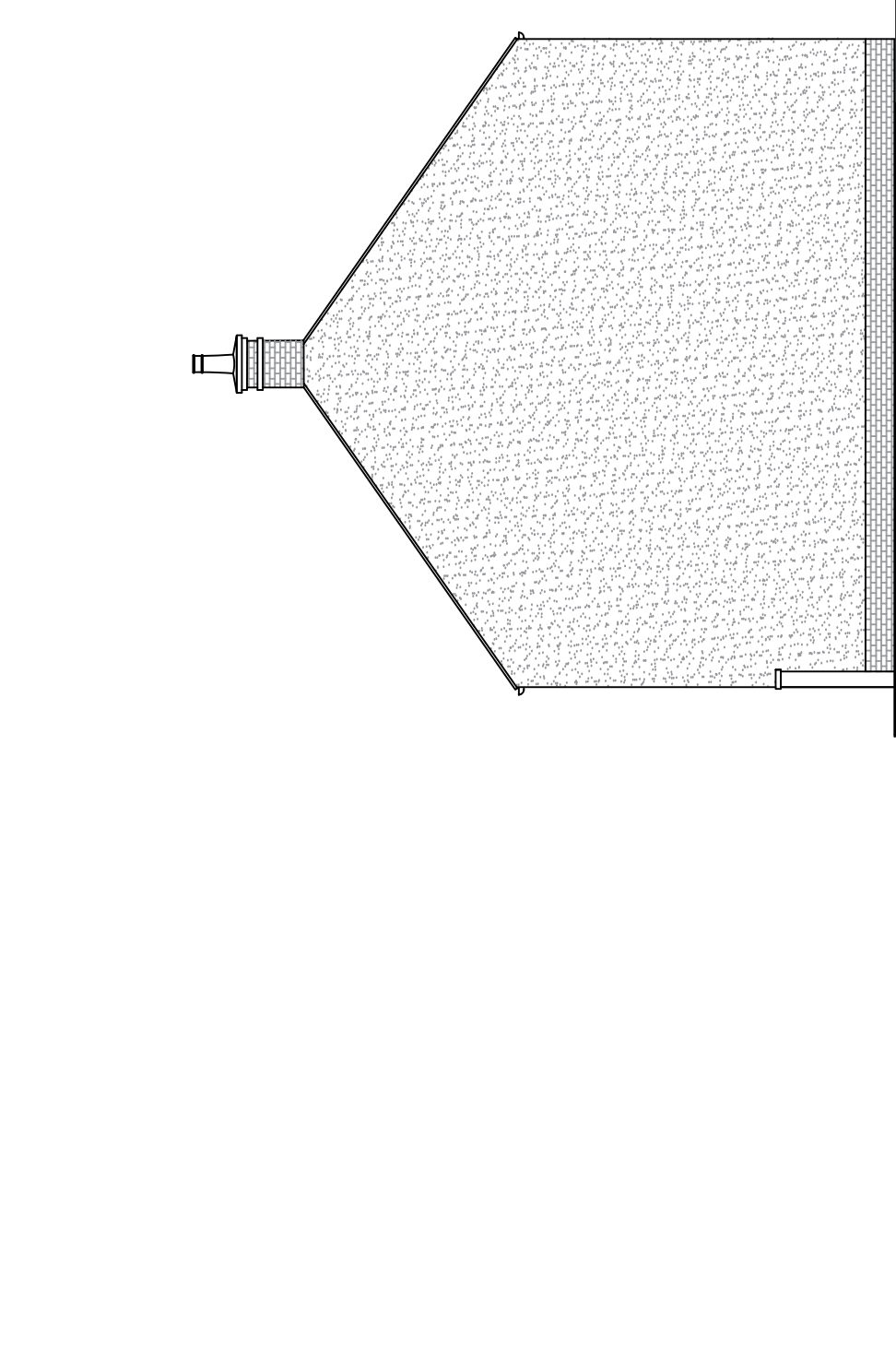
Drawing Status: Date: Nov. 2020

<p><b>Ashfield</b> PARTNERSHIP</p>	<p><b>MORRISH HOMES</b> BUILDING QUALITY THROUGH GENERATIONS</p>	Unit 5, Factory Road, Upson Industrial Estate Plymouth PL6 6SL Project Ref: BH1655L 01202 623420 www.morrishhomes.co.uk
Project title: <b>HOE LANE NORTH BADDESLEY</b>		
Unit no. <b>Plots 88-94</b>		
Scale: 1:100 @ A1 Drawn by: JUM Checked by:		
Date: DEC 20		
Drawing title <b>Plans &amp; Elevations</b>		

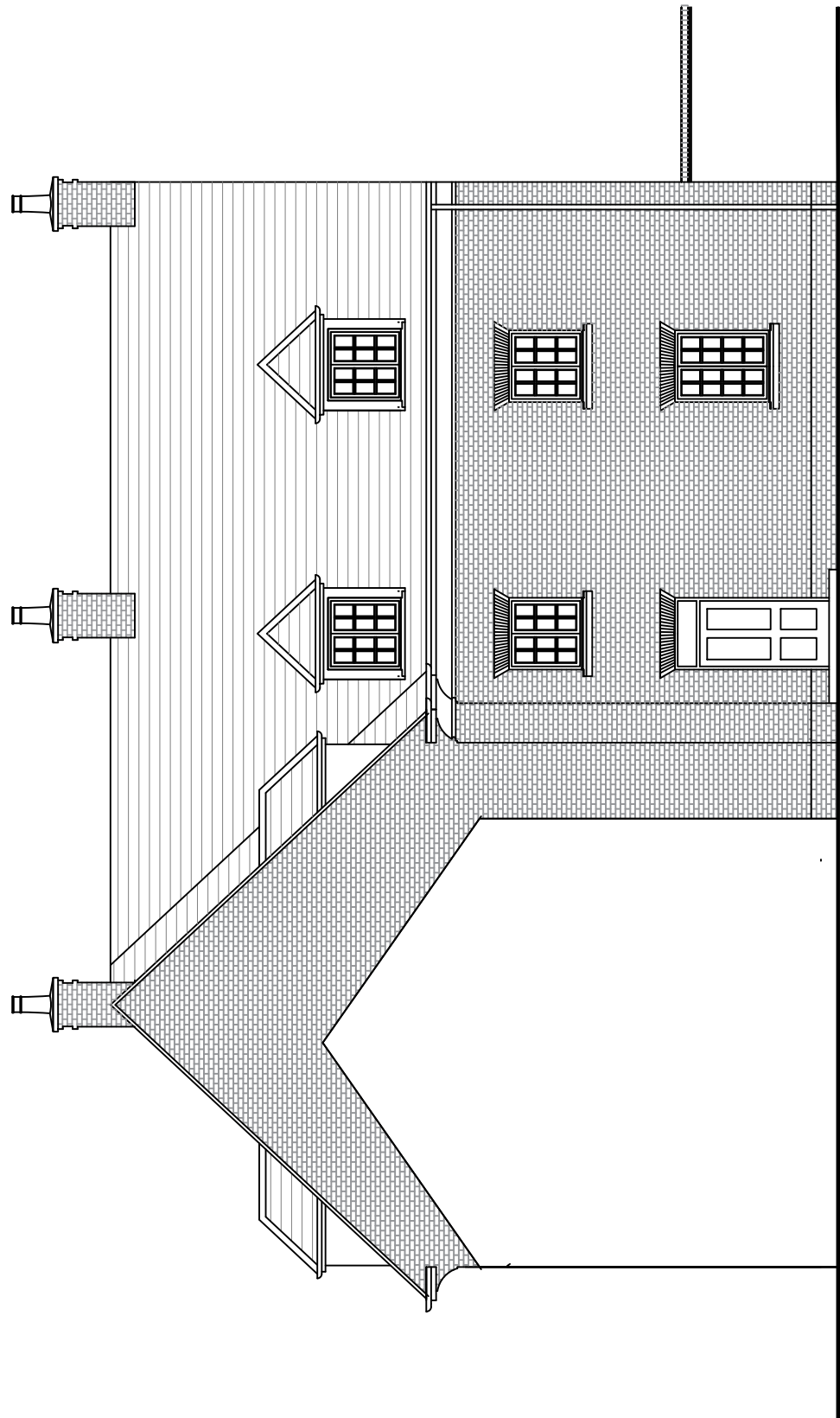
drawing no. **M028/C/88-89-90**  
 91-92-93-94  
 rev. **A**



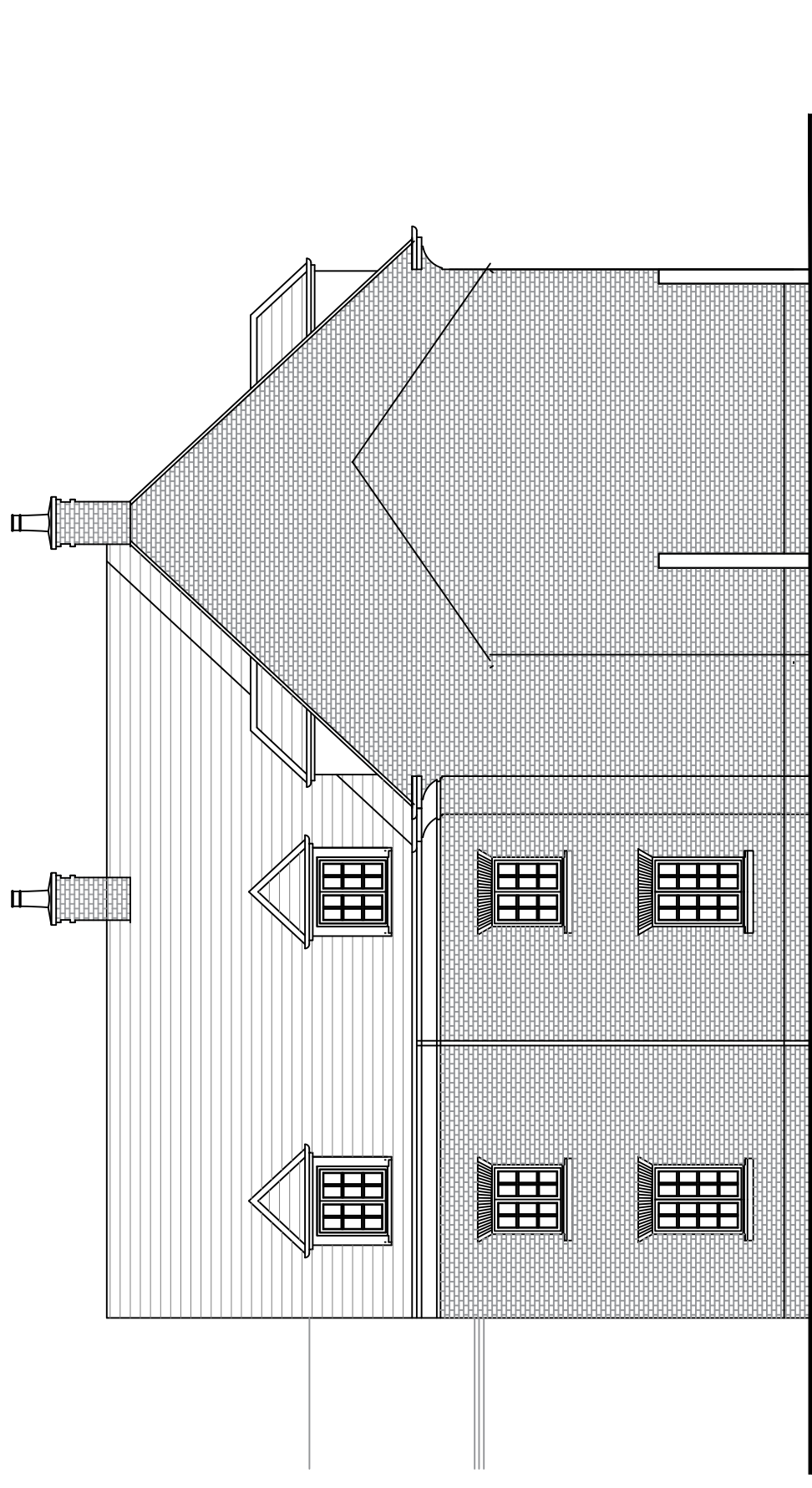
West Elevation



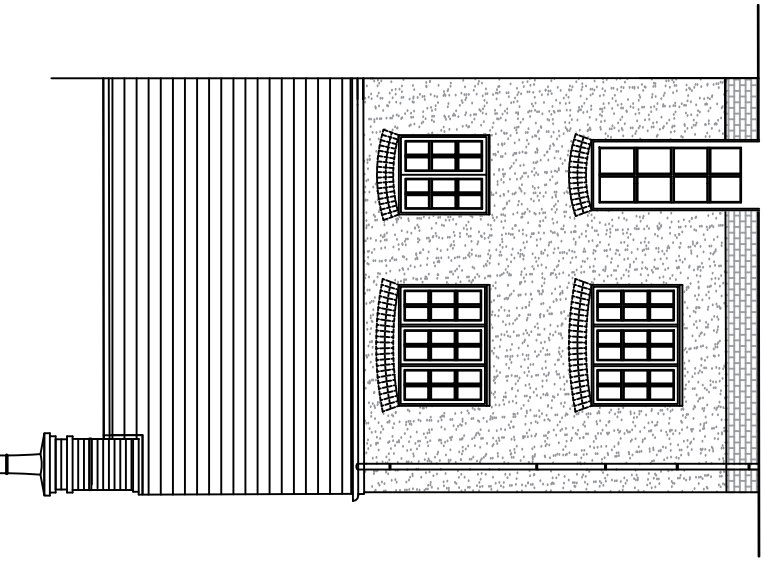
Plot 88  
East Elevation



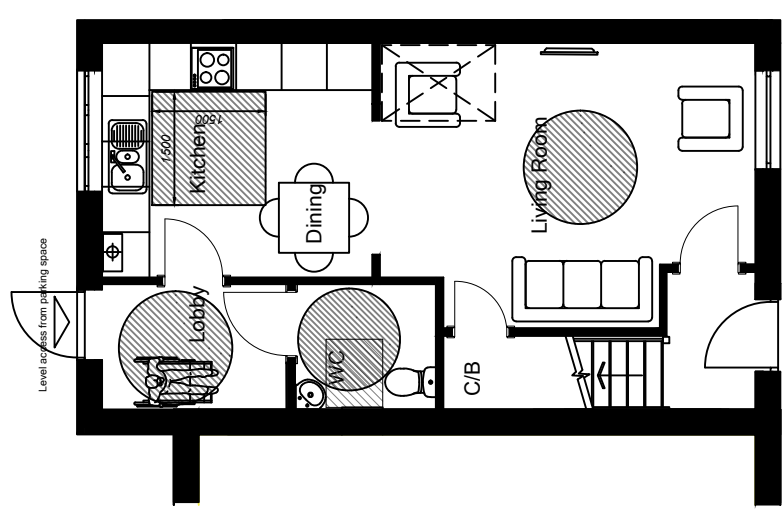
East Elevation



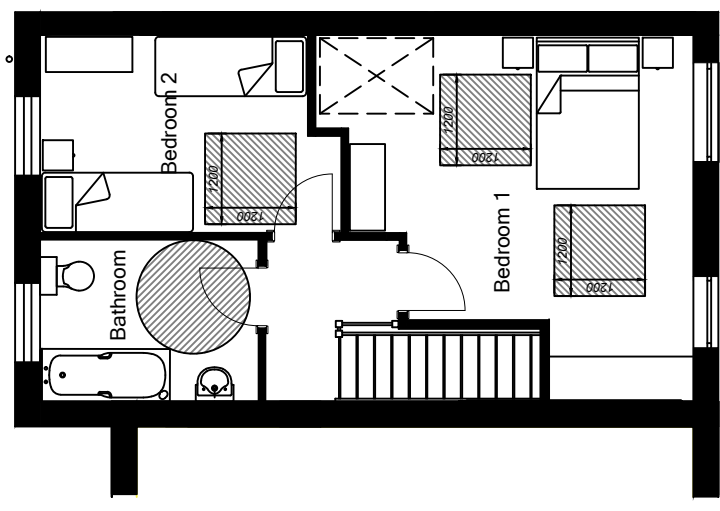
South Elevation



Plot 88  
South Elevation



Plot 88 Total floor area = 65.48m2  
Ground Floor Plan

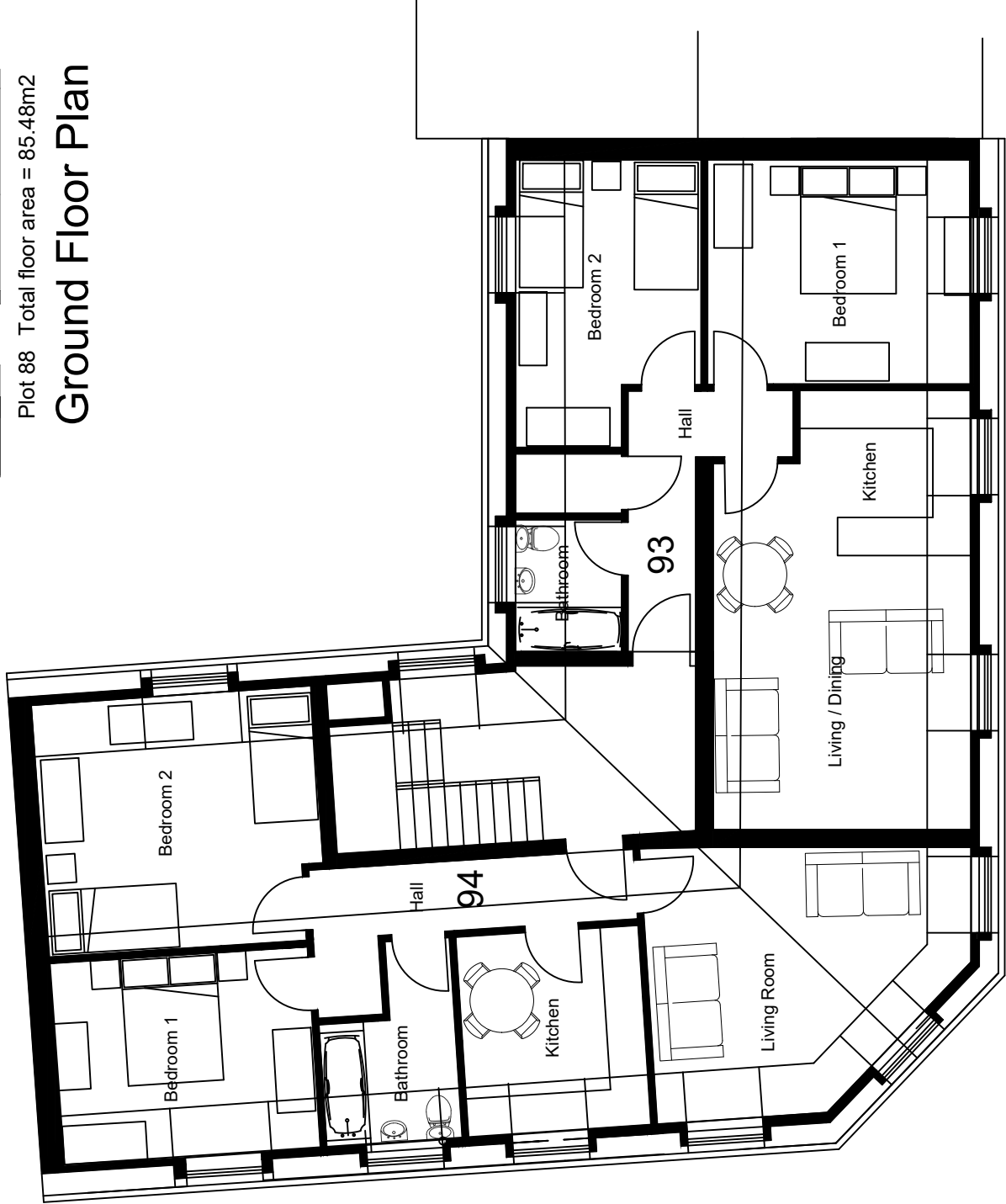


Plot 88  
First Floor Plan



Plots 89 - 94  
Ground Floor Plan

Plots 89 - 74.80m2  
 Plots 90 - 68.60m2  
 Plots 91 - 68.60m2  
 Plots 92 - 74.80m2  
 Plots 93 - 72.40m2  
 Plots 94 - 66.65m2



Plots 89 - 94  
Second Floor Plan