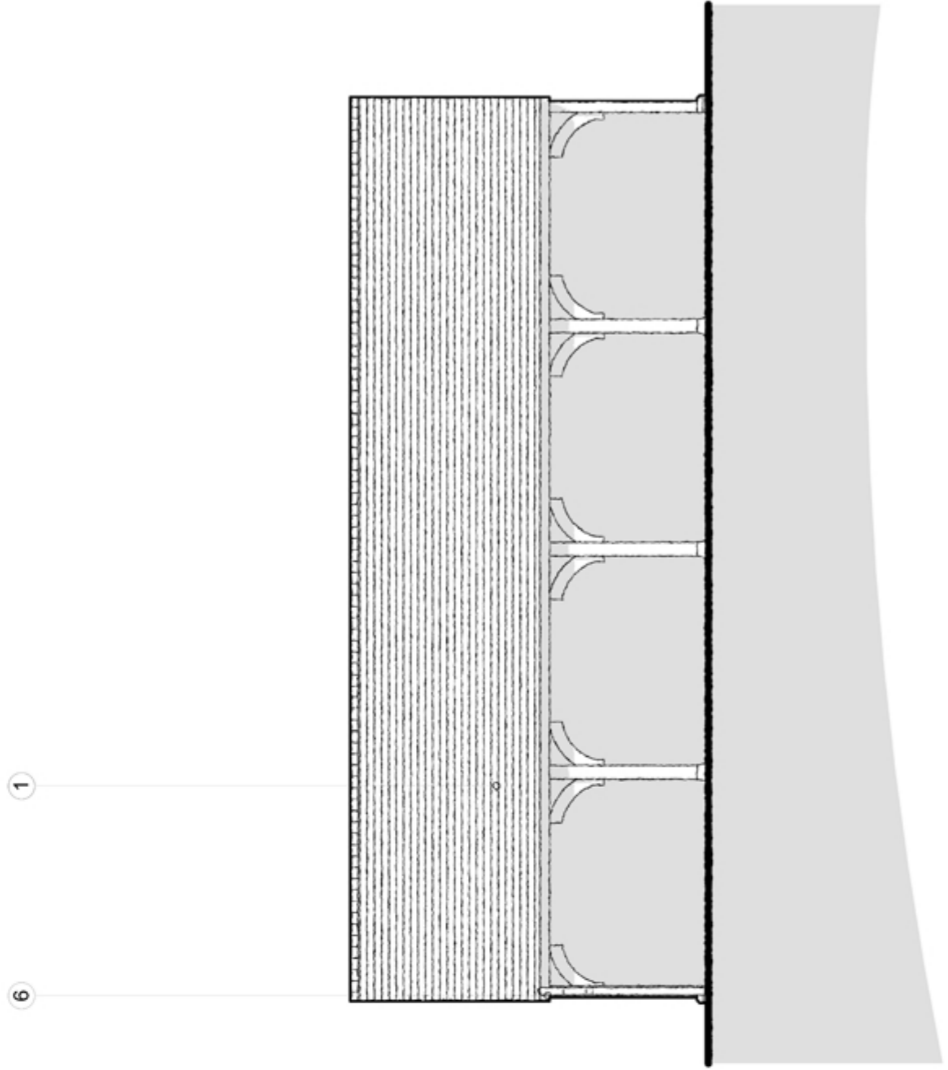


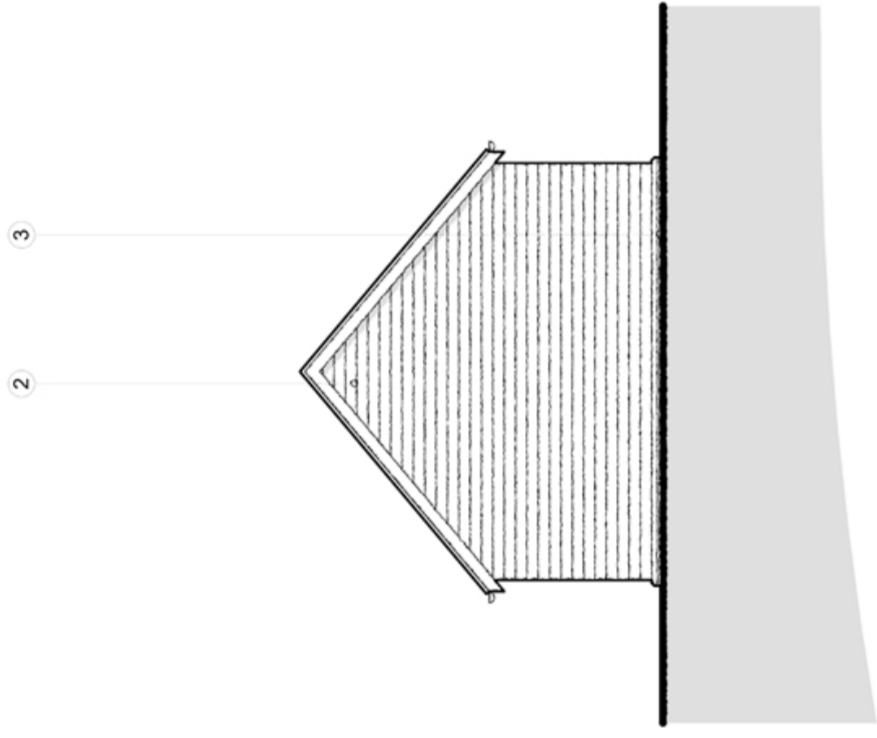
MATERIALS KEY

- 1. Plain Clay Roof Tiles
- 2. Timber Boarding
- 3. Facing Brickwork
- 4. Timber Porch
- 5. Upvc Double Glazed Windows [colour of frame tbc]
- 6. Black Upvc Cast Iron Style Rainwater goods

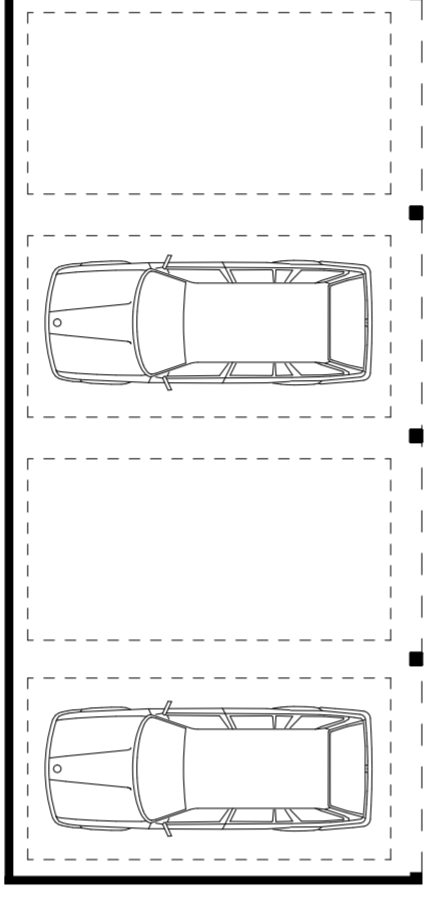
\* Obscure Glazing



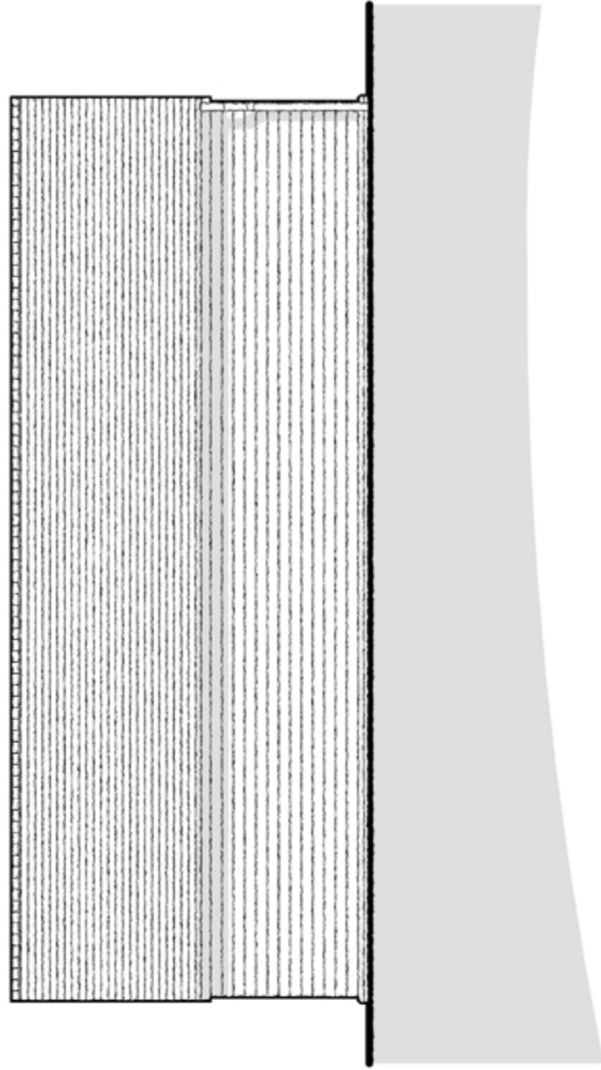
FRONT ELEVATION 1:100



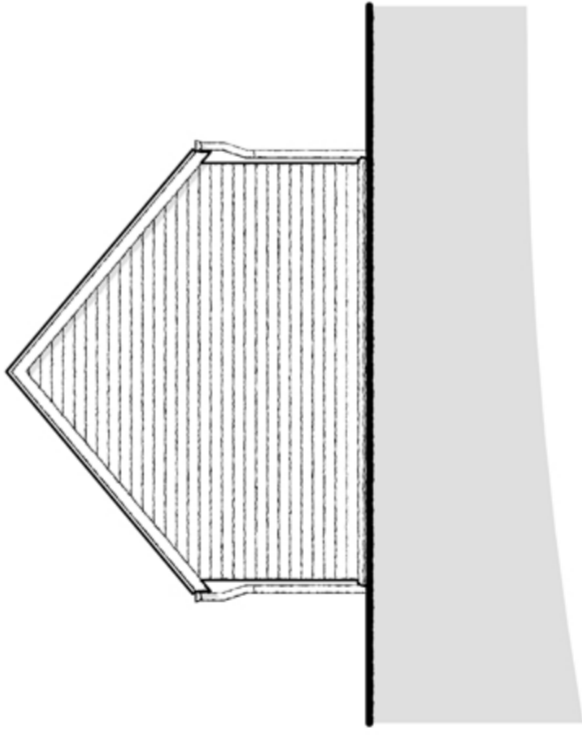
SIDE ELEVATION [1] 1:100



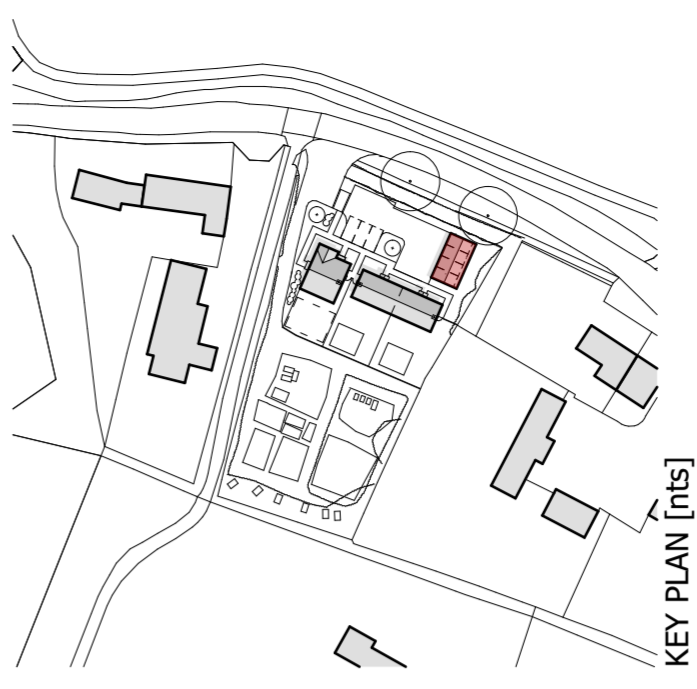
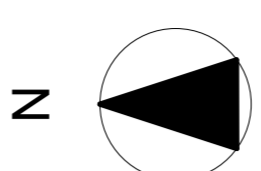
PLAN 1:100



REAR ELEVATION 1:100



SIDE ELEVATION [2] 1:100



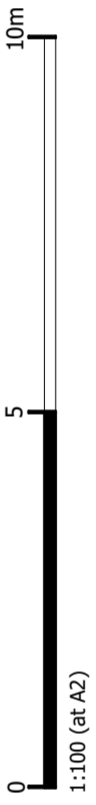
KEY PLAN [nts]

REV	DESCRIPTION	DATE	AUTHOR	CHKD	NOTES
-	-	-	-	-	-

NOTES

10m

0 5 1:100 (at A2)



This drawing is the copyright of Tetra Tech Design Studio and may not be copied, altered or reproduced by a third party without written authority. All dimensions are subject to site survey and site verification. Do not scale from this drawing.

PROJECT  
Houghton Allotment Site |  
Houghton  
CLIENT  
Trustees of the Captain  
Busk Grandchildren  
DRAWING  
CAR BARN PLAN &  
ELEVATIONS

JOB NO.  
A075180  
SCALE @A1  
1:100  
DATE  
14/06/2021

DRAWING NO.  
211  
AUTHOR/CHKD  
CW/SL  
REVISION  
-



SOUTHAMPTON | BOTLEIGH GRANGE OFFICE CAMPUS  
HEDGE END, SO30 2AF | 02382 022800 | TETRATECH.COM