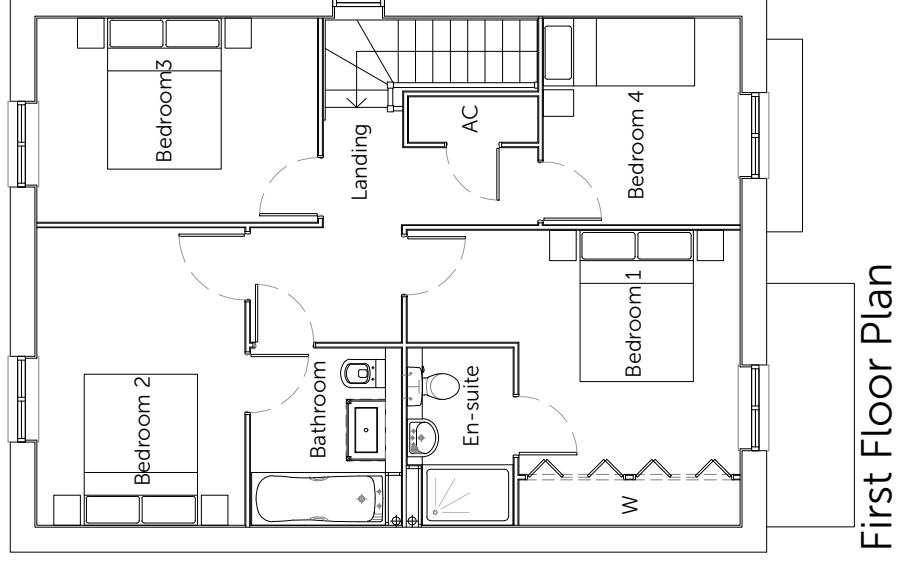
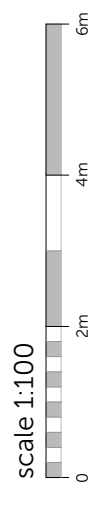


Ground Floor Plan



First Floor Plan

HouseType	E	Variation	Option	1-2	PLOT NO.
Bedrooms	4	Persons		7	As Drawn - 54
Sq.ft	1380	Sq.m		128.2	Handed - 45



Romsey Office
 Building 300, The Grange,
 Romsey Road,
 Michelmershi, Romsey,
 Hampshire, SO21 3AL
 T:01794 367705 F:01794 367276

Portishead Office
 Unit 5, Middle Bridge Business Park,
 Bristol Road,
 Portishead,
 Bristol, BS20 6PN
 T:01275 407000 F:01794 367276

Rev **Description**

A	Planning Issue.
B	Plot numbers adjusted

Date **AU** **Ch**

27.11.19	ZC	MAP
05.11.21	ZC	

Project **Abbotswood House, Romsey**

Drawing **House Type E (PRI)**

Floor Plans

Client	Alfred Homes & Vivid Housing	Date	Oct 19
Job no.	ALFR180910	Rev.	B
Dwg no.	HT.E.p	Checker	MAP
Author	MAP	Scale	1:100 at A3
Status	PLANNING	Office	Romsey
Client ref.			