

client Tony Langridge Consulting

project 12 Branksome Close, Chilbolton,
Stockbridge, SO20 6AQ

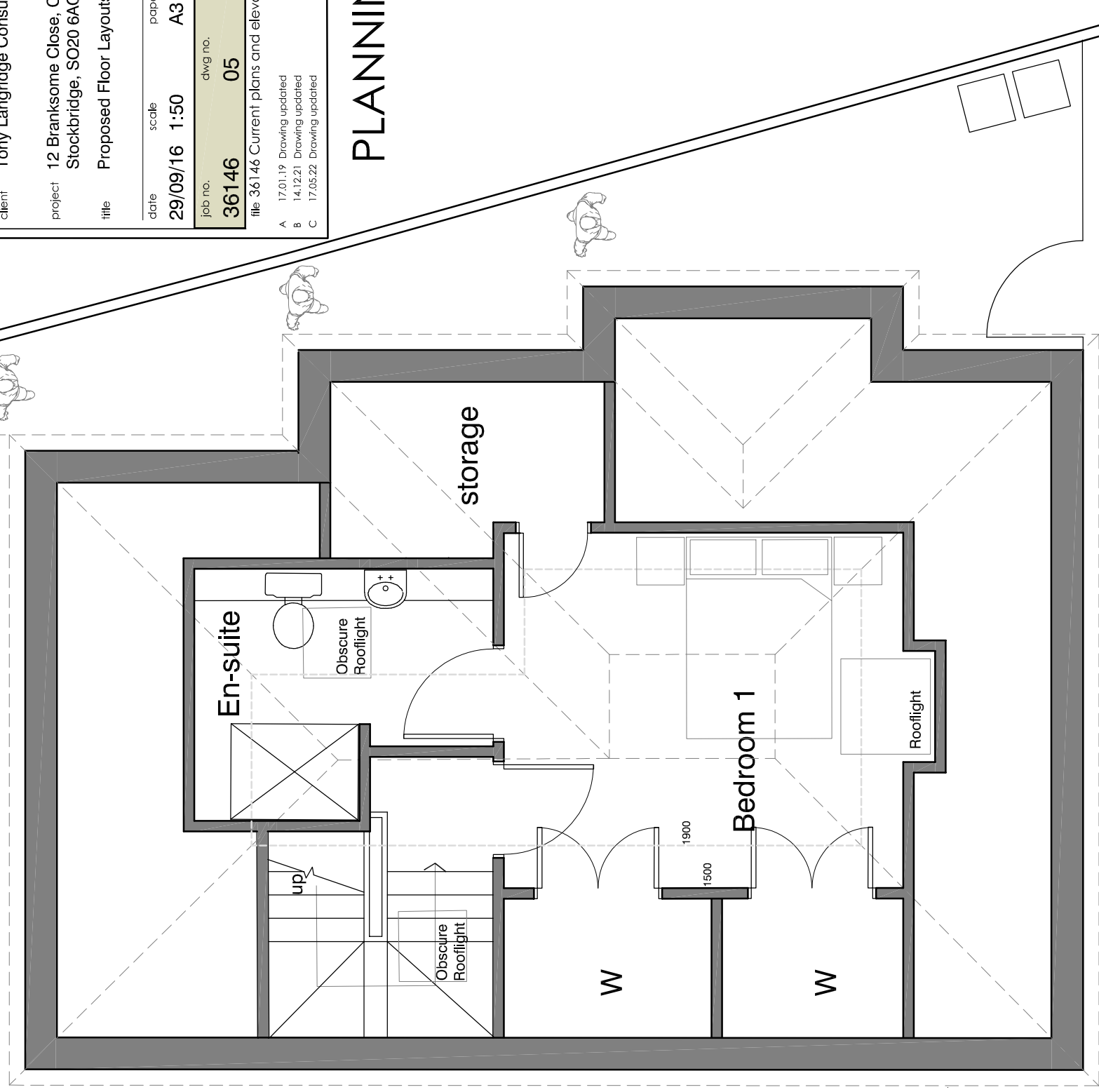
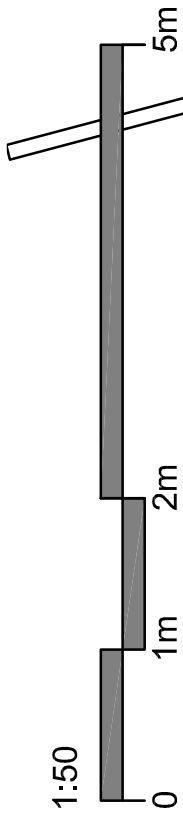
title Proposed Floor Layouts

date	scale	paper	drawn	checked
29/09/16	1:50	A3	CR MB	MB
job no.	dwg no.	revision		
36146	05	C		

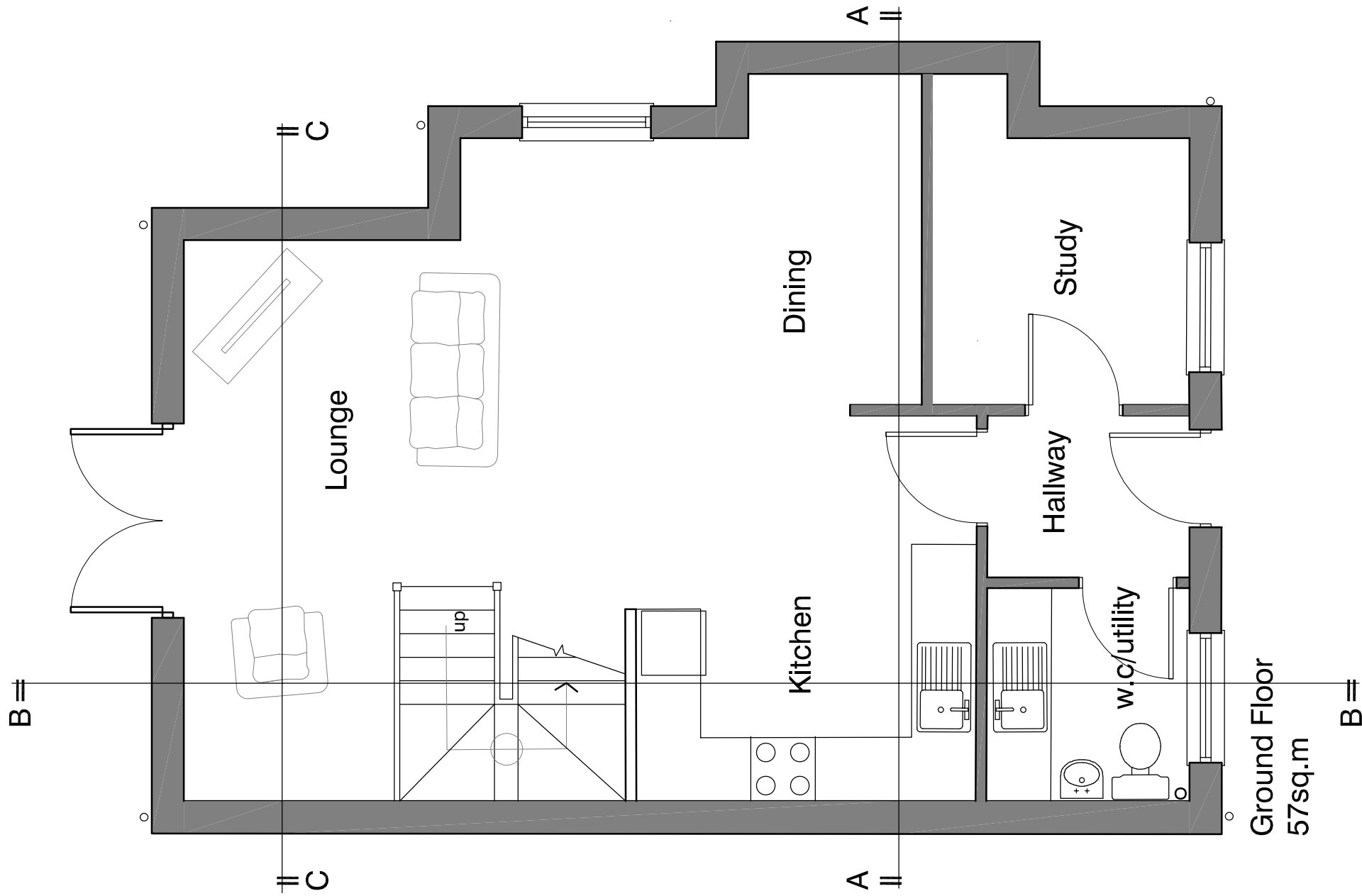
file 36146 Current plans and elevations Rev L

		by CR	checked MB
A	17.01.19	Drawing updated	checked MB
B	14.12.21	Drawing updated	checked MB
C	17.05.22	Drawing updated	checked MB

PLANNING



First Floor
34sq.m



Ground Floor
57sq.m