



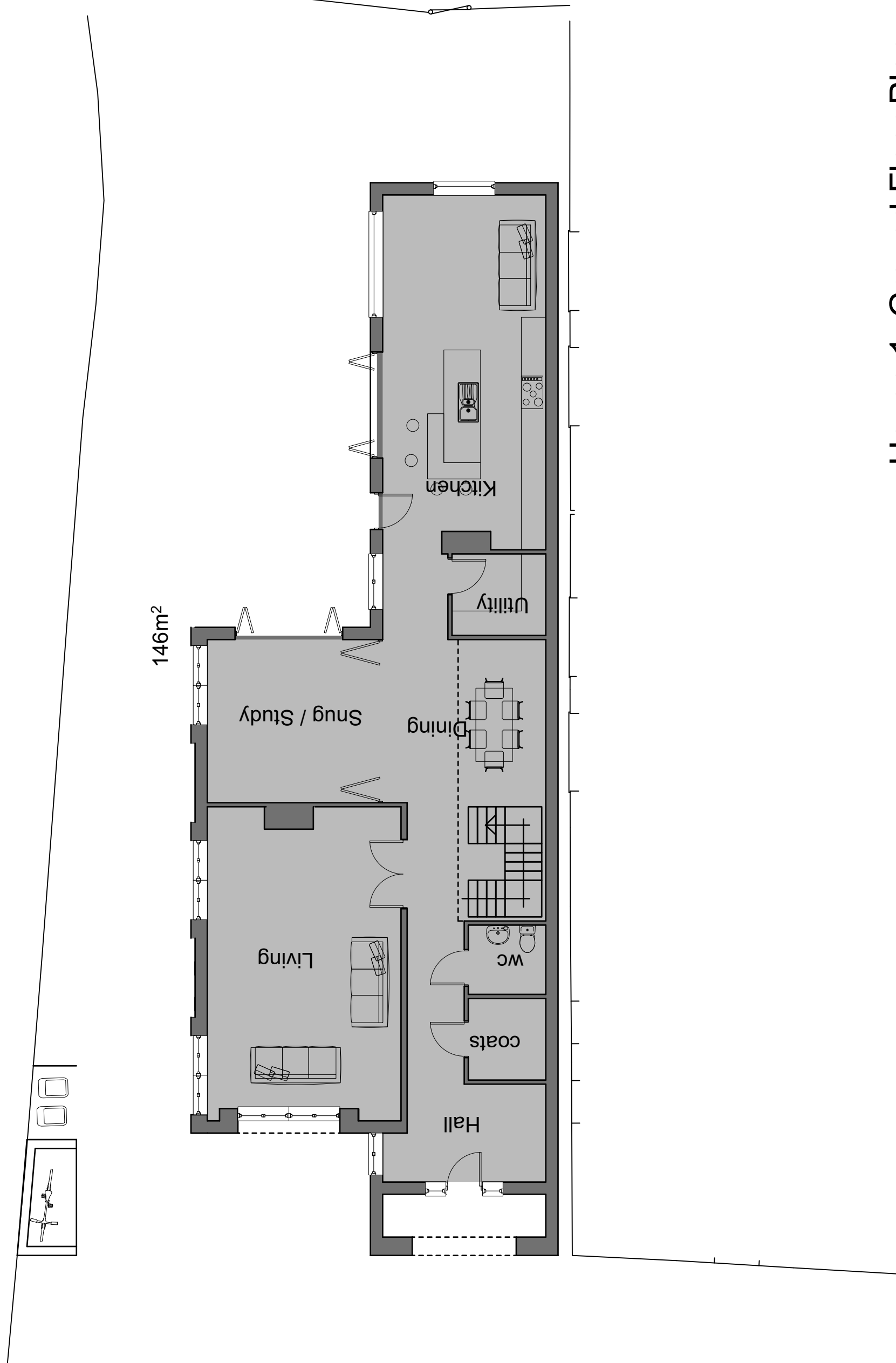
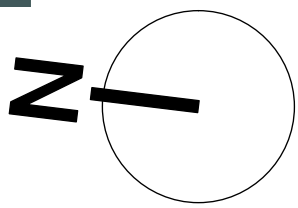
db | Drawn | checked

March 2022

Site to rear of 11 Church Street, Romsey SO51 8BT

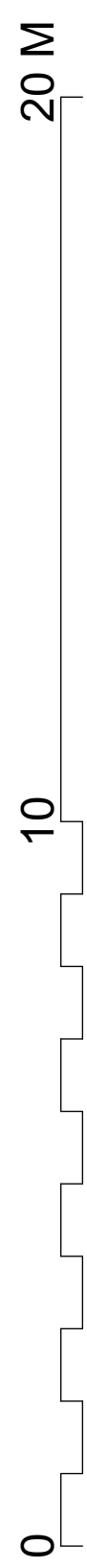
House 1 Ground Floor Plan 1:100@A3

8020 / P04a



146m²

House 1 Ground Floor Plan



THE
Genesis Design
STUDIO

CHARTERED ARCHITECTS

MEAD MILL MILL LANE ROMSEY
HAMPSHIRE SO51 8EQ

T: (01794) 519333
F: (01794) 519666
E: mail@thegenesistudiostudio.com

© The Genesis Design Studio Ltd