

REVISIONS

Rev.	By	Date
A	Doors & windows amended to flats 5, 6 & 7.	Aug '23 KLS
B	Amendments to O/L, guest suite, buggy store and flat 11 locations.	Nov '23 KLS

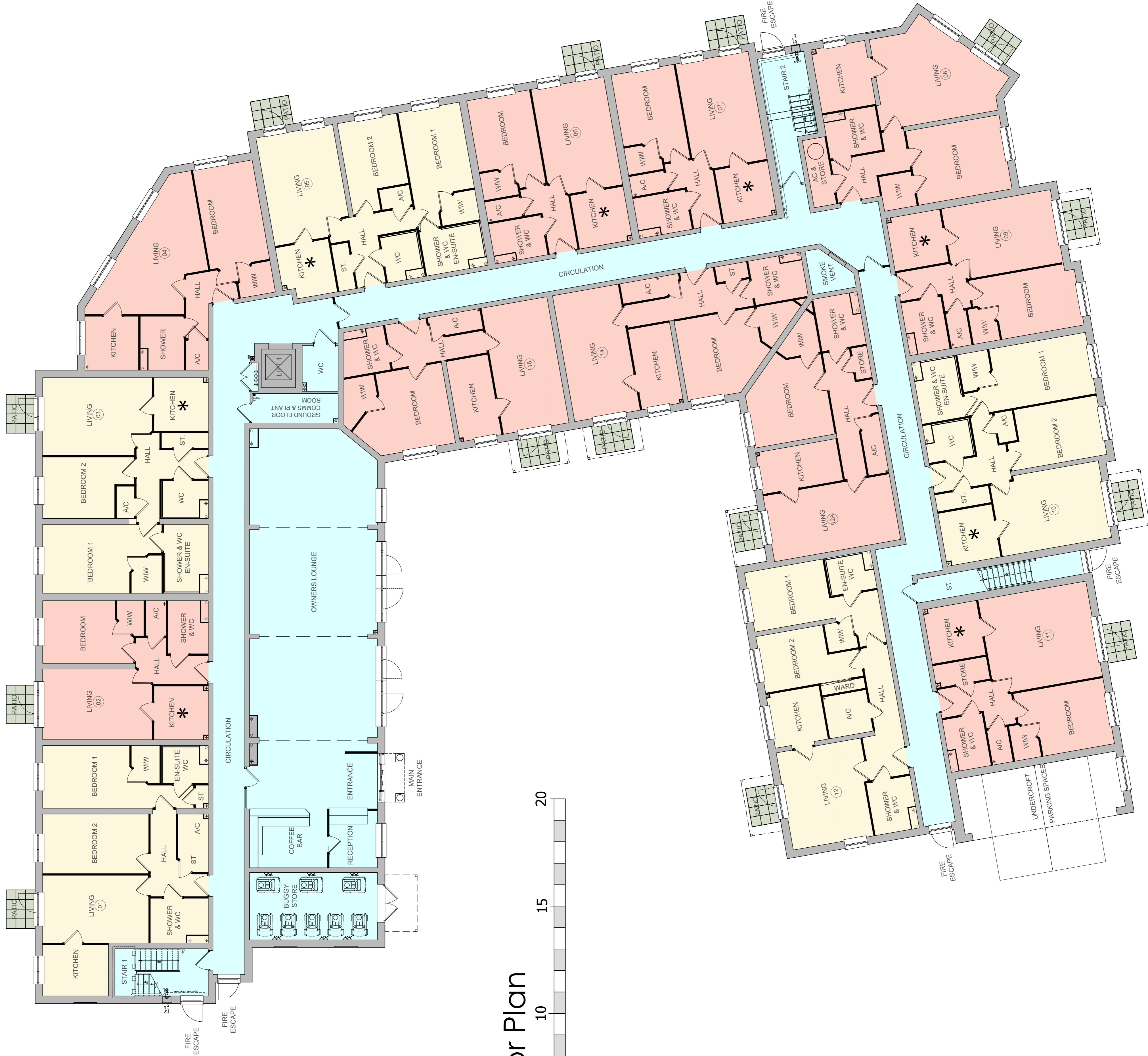
©CHURCHILL RETIREMENT LIVING
planning issues
 TOWN PLANNING AND ARCHITECTURAL DESIGN
 Rob JACKSON RIBA
 Churchill House - Paradise
 100 Paradise Road
 Romsey, Hampshire SO51 8JH
 Telephone: (0)1425 462129
 Fax: (0)1425 462101
 Email: info@planningissues.co.uk

Client
Churchill Retirement Living

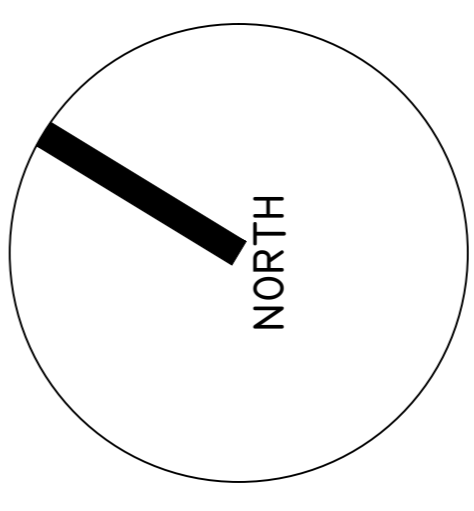
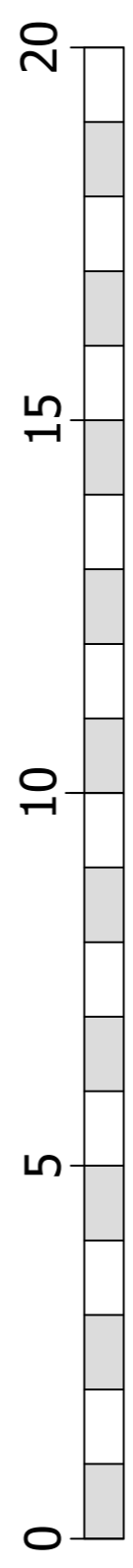
Project Title
 Retirement Living Apartments
 Edwina Mountbatten House - Broadwater Road
 Romsey
 SO51 8GH

Drawing Title
**PROPOSED GROUND FLOOR PLAN
 PLANNING APPLICATION**

Scale: 1:100 @ A1
 Date: JUNE 2023
 Drawn: KLS
 Checked: RJ
 Drawing No.: 10123RS - PA02
 Rev.: B



Ground Floor Plan
 scale bar - metres



FFL +16.750M AOD

FLAT MIX:	
1 BED APARTMENTS = 09	
2 BED APARTMENTS = 05	
TOTAL	= 14
- 1 BED APARTMENTS	
- 2 BED APARTMENTS	
- COMMUNAL AREAS	
- INTERNAL KITCHEN	