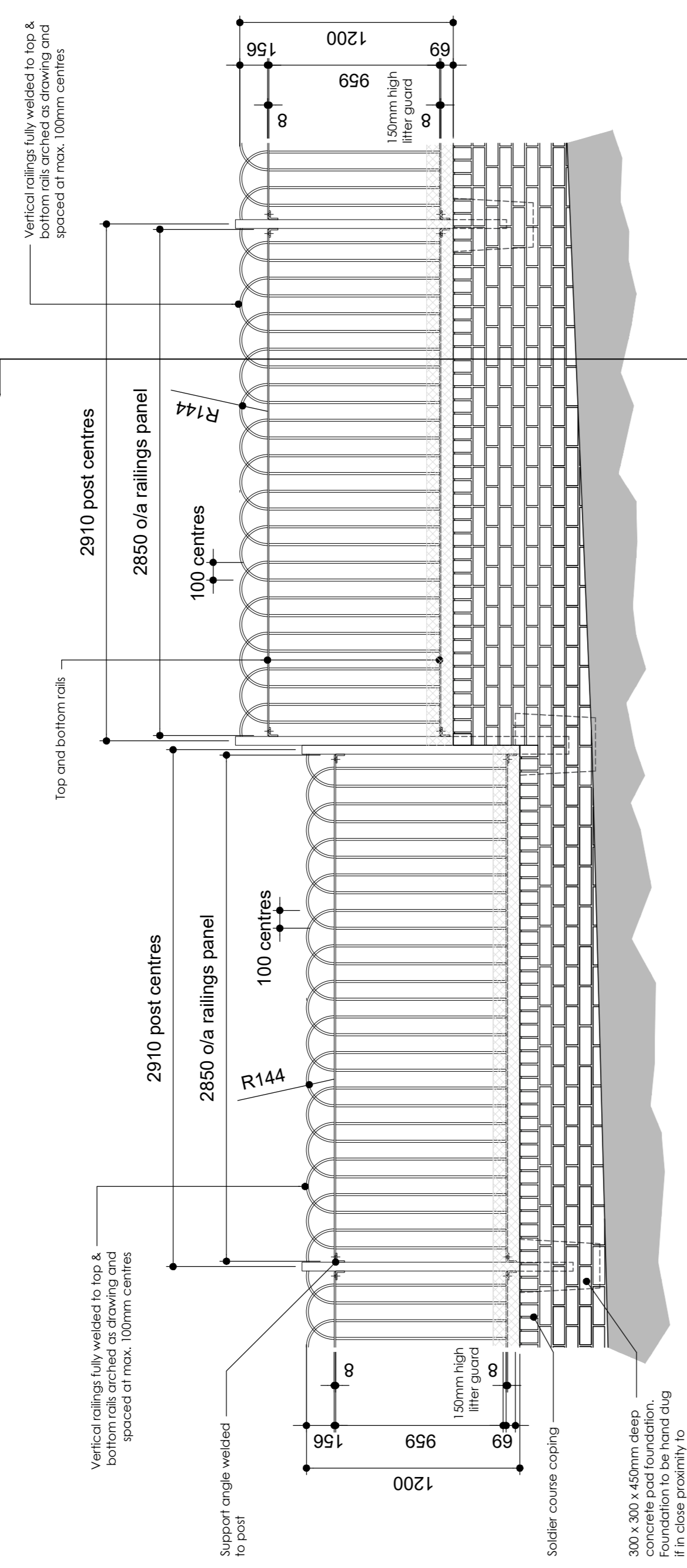


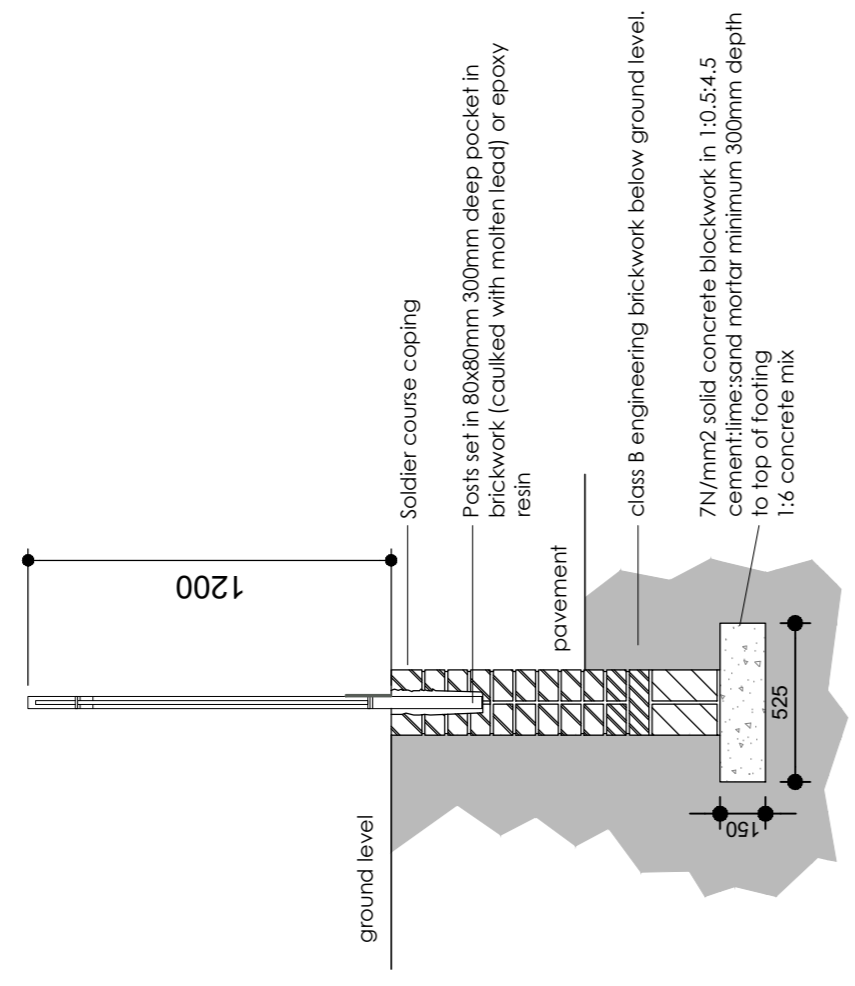
REVISIONS	Rev.	Date	By



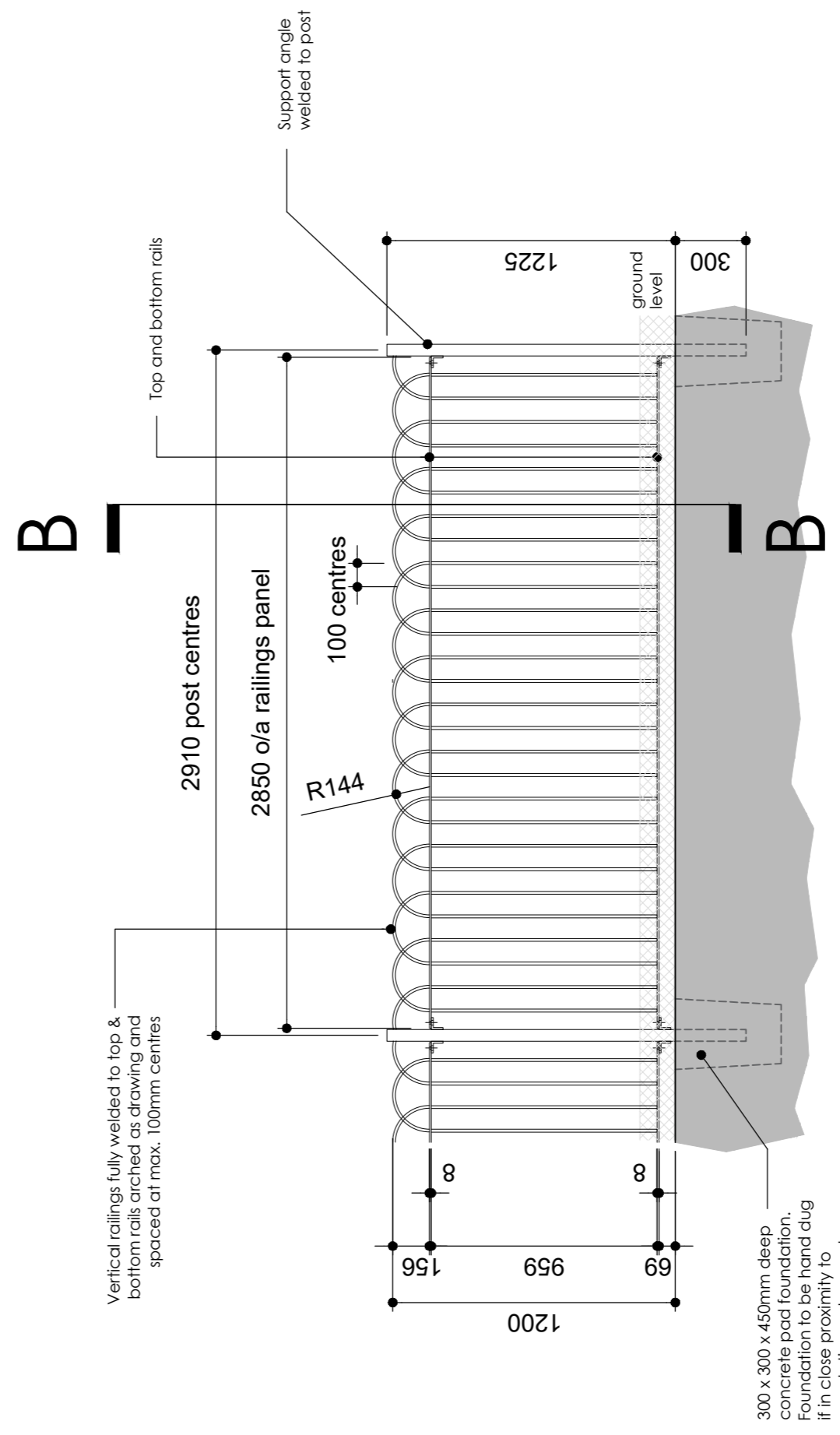
Part Elevation facing
Broadwater Road (1:25)



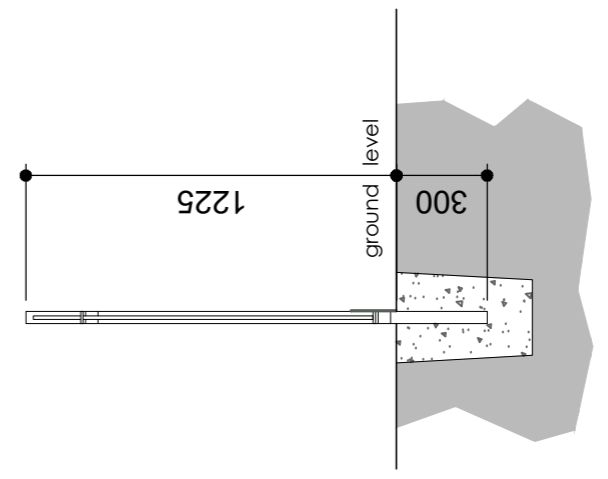
Part Plan (1:500)



Section A-A (1:25)



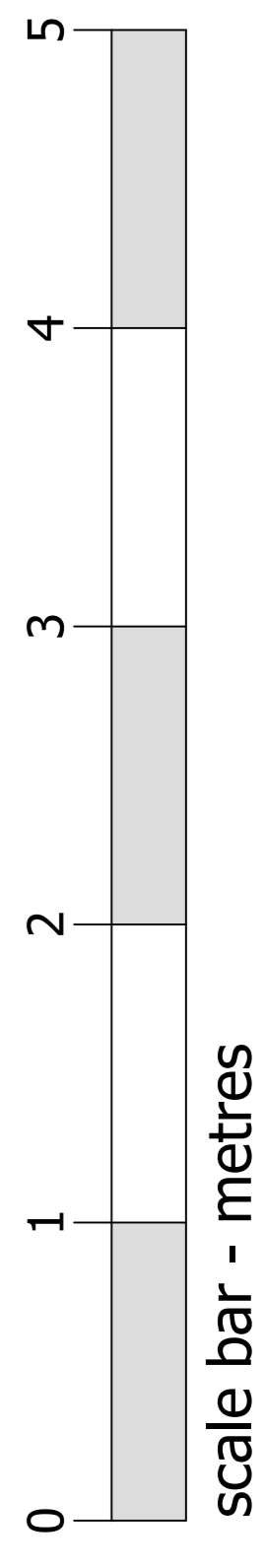
Part Elevation facing
Palmerston Street (1:25)



Section B-B (1:25)

Specification

- Materials:**
- 50 x 50mm SHS
 - 40 x 8mm MS flat
 - 12mm Ø MS round
 - 50 x 50 x 8mm MS angle, 40mm long
 - M10 x 30mm SS bolt with nut & washers
- Treatment/Decoration:**
- All steelwork to be galvanised and decorated with polyester powder coat paint finish, colour Black.
- Notes:**
- 12mm wide x 20mm long fixing slot in top face of MS support angles.
 - 12mm Ø fixing hole at each end of top & bottom rails to correspond with fixing slot in support angles.
 - All dimensions to be checked on site prior to fabrication.



planning issues
TOWN PLANNING AND ARCHITECTURAL DESIGN
ROB JACKSON RIBA
Churchill House - Projects
Ringwood - Hampshire BA14 3SG
Telephone: 01423 842109
Email: steve@planningissues.co.uk

Client
Churchill Retirement Living

Project Title
Retirement Living Apartments
Edwina Mountbatten House - Broadwater Road
Romsey
SO51 8GH

Drawing Title
PROPOSED RAILINGS
PLANNING APPLICATION

Scale: 1:25 @ A1
Date: JULY 2023
Drawn: KLS
Checked: RJ
Drawing No.: 10123RS - PA12