

Area Schedule (GIA)				
Unit	Level	Comments	Area m	Area ft
Unit 08	00_Ground		166 m ²	1789 ft ²
Unit 08	01_Mezzanine	23% of GF Area	38 m ²	411 ft ²
Unit 09	00_Ground		204 m ²	2200 ft ²
Unit 09	01_Mezzanine	23% of GF Area	169 m ²	1817 ft ²
Unit 10	00_Ground		39 m ²	418 ft ²
Unit 10	01_Mezzanine	23% of GF Area	208 m ²	2234 ft ²
Unit 11	00_Ground		169 m ²	1817 ft ²
Unit 11	01_Mezzanine	23% of GF Area	39 m ²	418 ft ²
Unit 12	00_Ground		208 m ²	2234 ft ²
Unit 12	01_Mezzanine	23% of GF Area	169 m ²	1817 ft ²
Unit 13	00_Ground		39 m ²	418 ft ²
Unit 13	01_Mezzanine	23% of GF Area	208 m ²	2234 ft ²
Unit 14	00_Ground		169 m ²	1817 ft ²
Unit 14	01_Mezzanine	23% of GF Area	39 m ²	418 ft ²
Unit 15	00_Ground		208 m ²	2234 ft ²
Unit 15	01_Mezzanine	23% of GF Area	166 m ²	1789 ft ²
Unit 15	01_Mezzanine	23% of GF Area	38 m ²	411 ft ²
Total Building B:			204 m ²	2200 ft ²
			1654 m ²	17806 ft ²

P1	Planning Issue	JN	NJ	22/11/23
Rev	Description	By	Check	Date

Hyphen
 3 Charlesde Mews
 Staple Gardens
 Winchester, SO23 8SR
 +44 1962 835500
 info@hyphen.archi

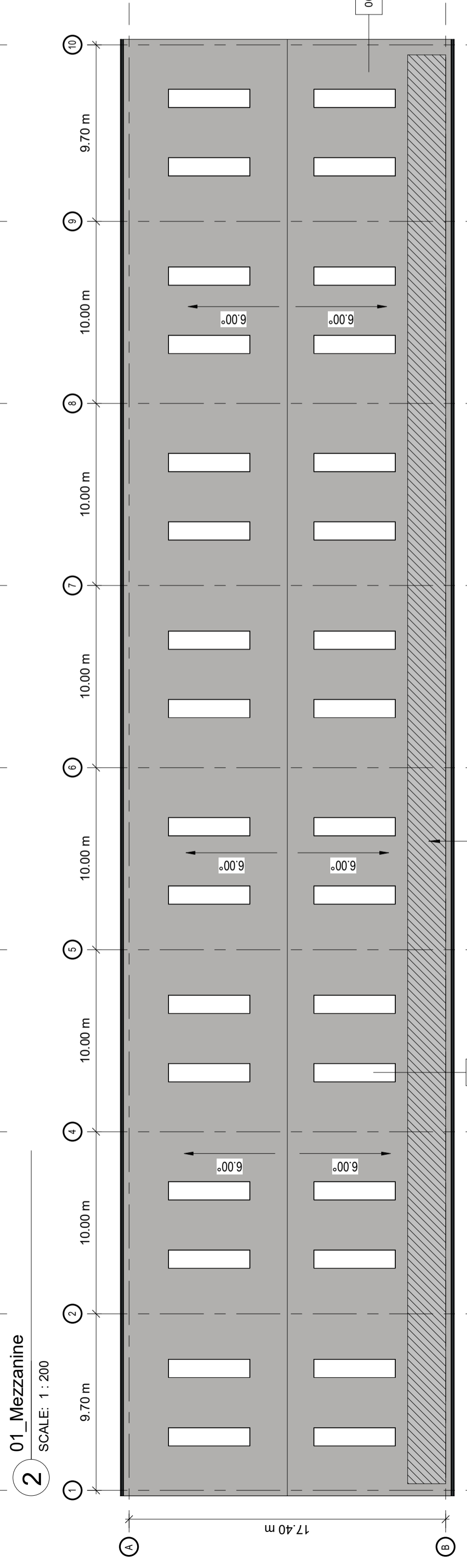
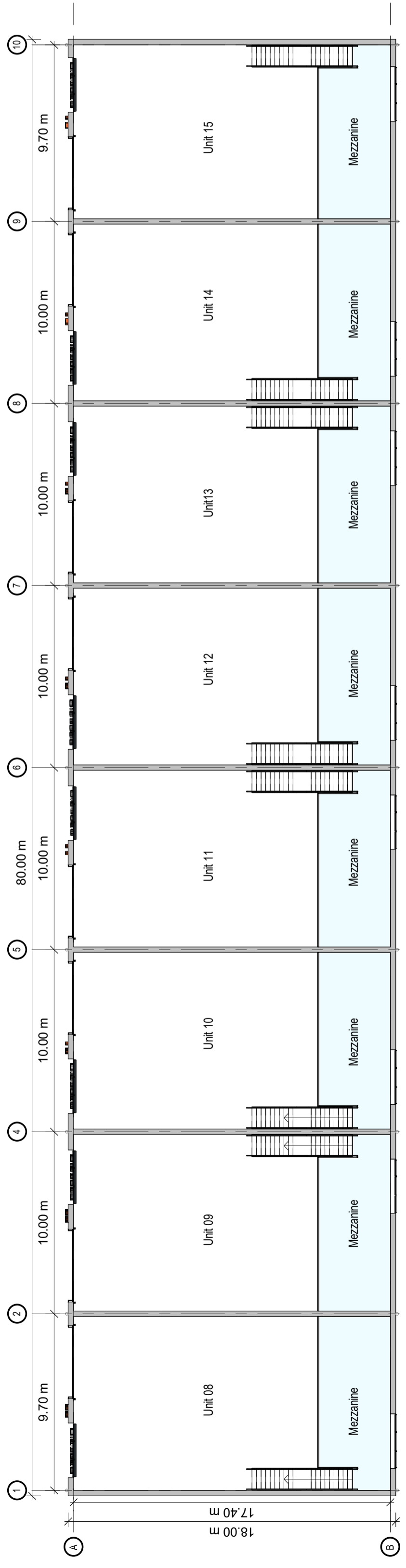
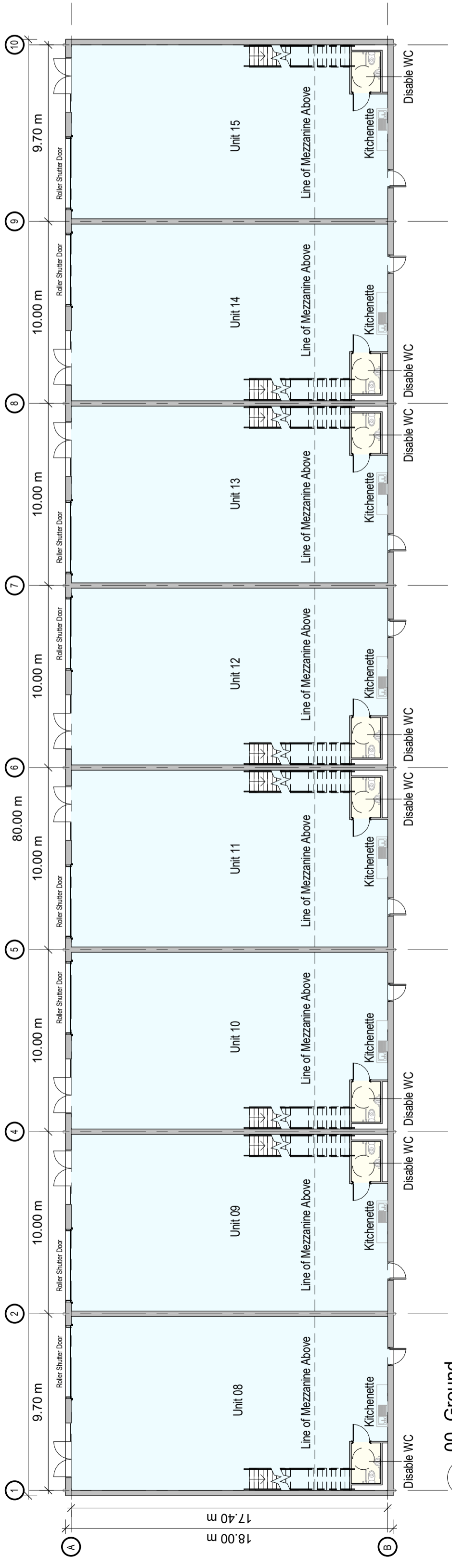
Client
Stratland Estates
 Project
Botley Road, Romsey

Drawing
Building B_GA Floor Plans

Scale	Date	Author	Checked
As indicated @A2	Nov 23	JN	NJ
Workstage	Status		
3	PLANNING		

Hyphen Project No
8847-A-202
 Revision
P1

Scale only for planning purposes
 Report any discrepancies to the author.
 © The Hyphen Group Ltd



PV PANELS
 Indicative only - location and specifications
 subject to specialist designer

06 Roof Type - Built-up metal cladding trapezoidal
 profile - Coosewing Grey (BS 080 70 05)

07 Rooflights - Translucent GRP, 10% Approx.