

Local Area Profile

This profile briefly describes issues that are relevant to gambling (and also potentially alcohol licensing). Detailed information relating to each of the Borough wards is available on the Council's website at <https://www.testvalley.gov.uk/communityandleisure/my-local-area-new/ward-profiles>

Age

At 22.6% Test Valley has a smaller percentage of **young people** (aged 0-19) than the Hampshire average of 23.0%. By 2027, the proportion of young people will decrease slightly to 22.2% and will be 0.4% lower than the borough average. At 22.6%, Test Valley has a lower number of **young adults** (aged 20-39) than the wider county at 25.2%. The proportion of young adults living in the Borough is expected to decrease by 1.5% between 2020 and 2027, similar to a fall of 0.9% across Hampshire.

Middle aged residents (aged 40-69) constitute 40.2% of Test Valley's population, which is higher than the Hampshire average of 36.8%. This is forecast to decrease slightly to 39.8% by 2027, 2.8% below the county average. At 17.2%, Test Valley has a higher percentage of those **aged 70 and over**, 2.1% above the county average. By 2027 this percentage is forecast to increase by 2.2%, double the forecast increase of 1.1% for Hampshire as a whole.

Deprivation

The English Index of Multiple Deprivation 2019 is designed to identify areas where communities lack resources and are in need. To do this, seven factors are considered, which are:

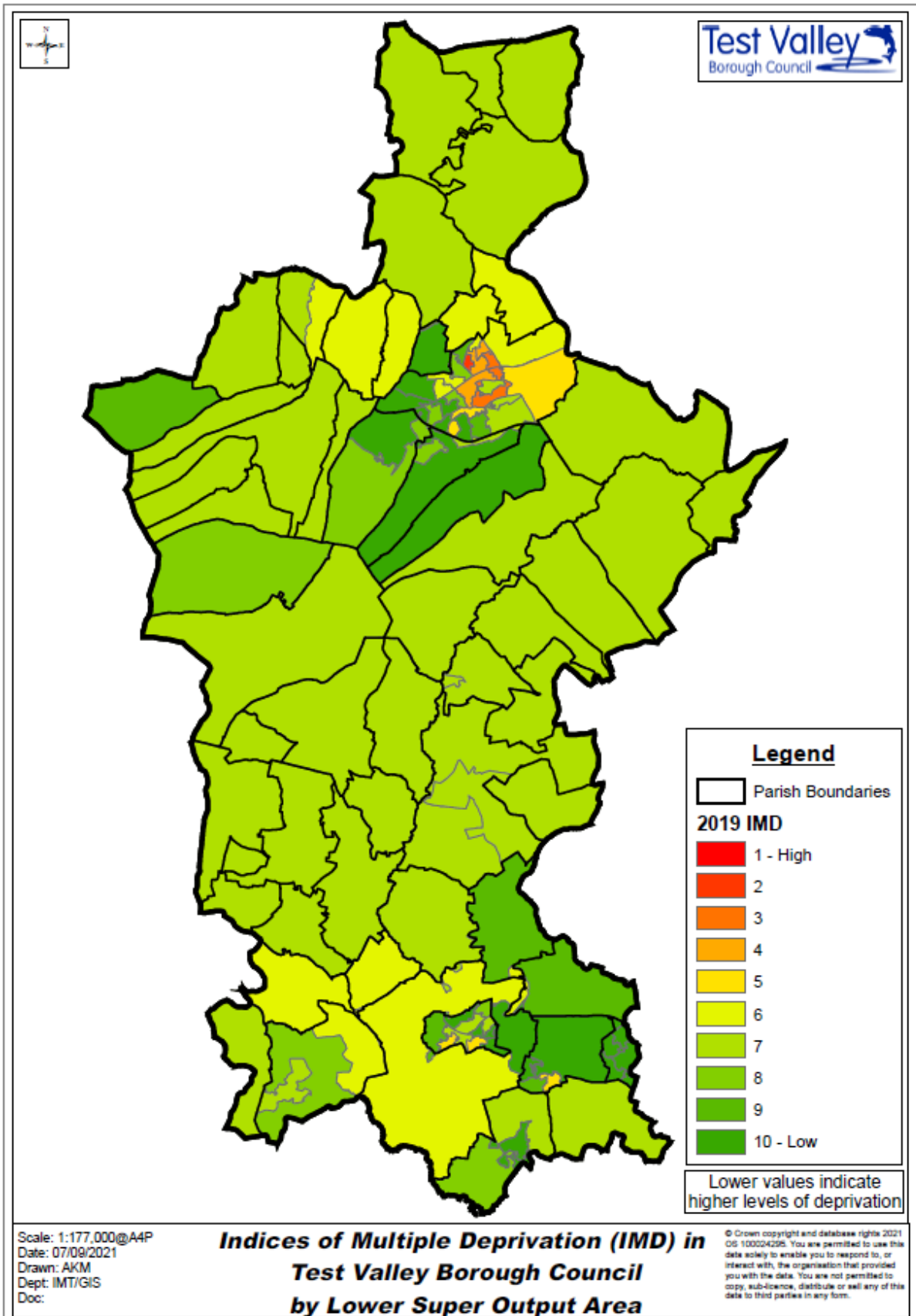
- income deprivation;
- employment deprivation;
- education, skills and training deprivation;
- health deprivation and disability;
- crime;
- barriers to housing and services;
- living environment deprivation.

Areas are scored on each of these factors and ranked nationally from least deprived to most deprived.

The map on the next page shows the deprivation scores for Test Valley. Test Valley is made up of 71 different Lower Super Output Areas, these are geographies created by the Office for National Statistics that include an average of 1,500 people. As the map shows, the Output Areas that make up Test Valley vary widely in their deprivation rankings. Large parts of the borough, as seen in dark green, are amongst the top 10% of least deprived areas the country. Conversely, there are some areas that are within the top 30% most deprived areas.

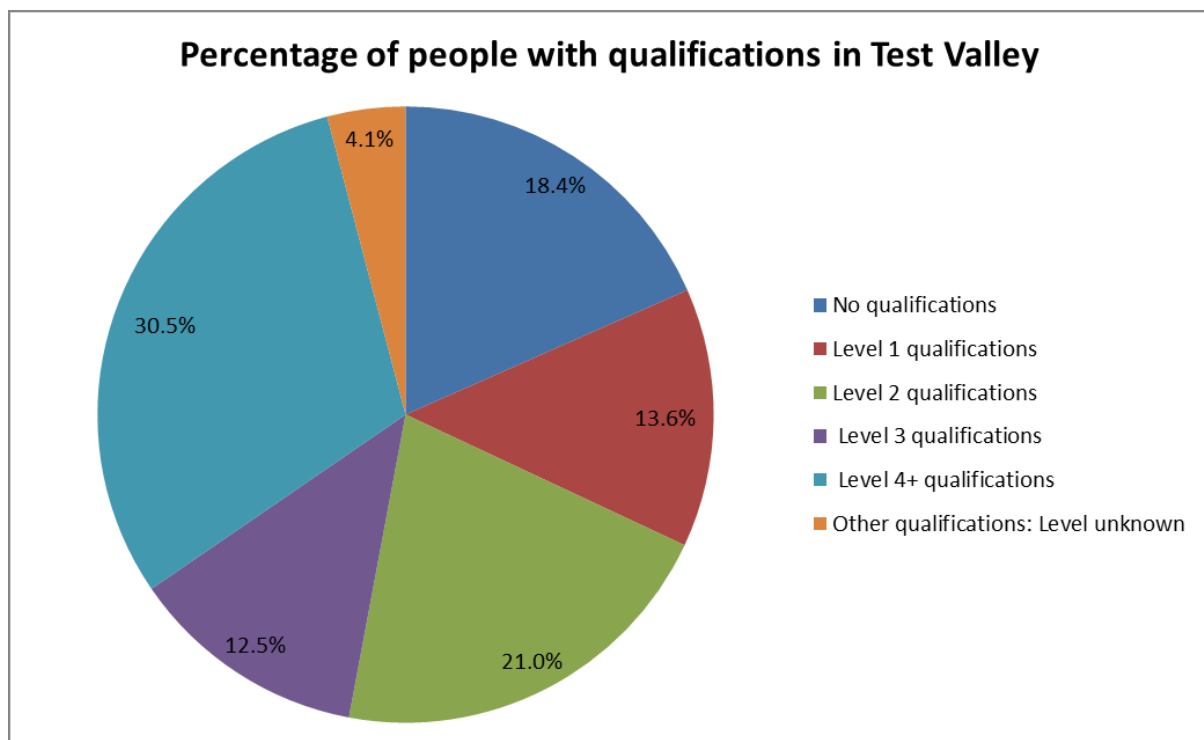
Further information about the Ministry of Housing, Communities and Local Government 2019 English Indices of Deprivation is available online at:

<https://www.gov.uk/government/statistics/english-indices-of-deprivation-2019>



Education

The pie chart shows the qualifications gained by Test Valley residents aged 16-74 years, according to the 2011 Census. 77.6% of people living in Test Valley have at least one GCSE or equivalent qualification, a figure which is higher than the English average of 71.8%. Additionally, 4.1% of residents have an unknown qualification, which is similar to the national average. This means that 18.4% of Test Valley's residents between 16 and 74 have no academic, vocational or professional qualifications, which is 4.1% lower than the English average. In addition, 30.5% of Test Valley's residents have a level 4 qualification or above, which is equivalent to at least an undergraduate degree. This is higher than the average for England which is 27.4%.



No qualifications	No academic or professional qualifications.
Level 1	1+'O' level passes, 1+CSE/GCSE any grades, NVQ level 1, Basic/Essential skills, NVQ Level 1.
Level 2	5+'O' level passes, 5+GCSEs (grades A*-C) 1 A level/2-3 AS levels. City and Guilds Craft, Apprenticeship, NVQ level 2.
Level 3	2+'A' levels, Higher School certificate, NVQ level 3, City and Guilds Advanced Craft, BTEC National.
Level 4/5	Degree (for example BA, BSc) higher degree (for example Master's, PhD, PGCE), NVQ levels 4 and 5, Qualified Teacher status, Nurse or Accountancy. BTEC Higher level.
Other qualification	Level unknown, vocational/work-related Qualifications, Foreign qualifications.

Schools

The Borough contains several maintained primary (not listed below), secondary and special schools and a 6th form college in Andover and the other centres of population as follows:

- Andover College, Charlton Road, Andover SP10 1EJ
- Harrow Way Community School, Harrow Way, Andover SP10 3RH
- Icknield School, River Way, Andover SP11 6LT
- Smannell Field School, Smannell Road, Andover SP11 6JP
- Norman Gate School, Vigo Road, Andover SP10 1JZ
- Wolversdene Special School, 22 Love Lane, Andover SP10 2AF
- The Mark Way School, Batchelors Barn Road, Andover SP10 1HR
- John Hanson Community School, Floral Way, Andover SP10 3PB
- Winton Community Academy, London Road, Andover SP10 2PS
- Rookwood School, Weyhill Road, Andover SP10 3AL
- Test Valley School, Roman Road, Stockbridge SO20 6HA
- The Mountbatten School, Whitenap Lane, Romsey SO51 5SY
- The Romsey School, Greatbridge Road, Romsey SO51 8ZB
- Embley Park, Romsey SO51 6ZE.

Economic Activity

According to the 2011 Census, 73.4% of Test Valley's residents aged 16-74 are economically active, higher than England as a whole where the figure is 69.9% of residents. This includes people in full-, part- and self-employment, those who are actively seeking a job, and full-time students.

The remaining 26.6% of residents aged 16-74 are economically inactive, compared to 30.1% of people in England. This includes people who are retired, long-term sick or disabled, or who look after the home and family.

The total number of Universal Credit or Jobseeker Allowance claimants aged 16 to 64 in the Borough as at January 2024 was 1460 with the highest concentrations being in Andover Harroway, Andover Romans and Andover St Mary's wards.

Health

At the 2011 Census, 84.6% of residents in Test Valley said they felt that they were in very good or good health. This is higher than the average for England (81.4%). 3.8% of the population rated their health as bad or very bad, which is lower than the average for England (5.5%). At the census, 2.4% of Test Valley residents considered themselves to be long-term sick or disabled.

The Hampshire Joint Strategic Needs Assessment 2021 (JSNA) shows 15,976 persons (12.1%) in Test Valley with two or more long term health conditions. The number people registered with depression in 2022/23 is 13,255 which at 14.12% of the population is higher than the England average at 13.25% but lower than the Hampshire and Isle of Wight average at 14.36%.

Crime

Test Valley shows the 6th lowest levels of reports of Serious Violent crime in 2022, at 209 incidents. This equates to a proportion of 1.5 people per 1,000 residents in the district which is considerably lower than the Hampshire and Isle of Wight Constabulary average of 2.4 and represents the joint sixth lowest rate for the county.

In 2022/23, Total Crime in Test Valley increased by 420. Reporting levels increased in each quarter of the first half of 2022/23 (n= 2,288 +137; 2,356 +299) before falling in the latter half, (n= 2,179 -6; 1,970 -158). The highest levels of reported crime took place in July (857, up from 753 in the previous year), and October (796). January (627), and February (646 up from 645) showed the lowest rates. Within Hampshire there have been 175,728 offences recorded throughout 2022 which is an 8.2% increase (+13,388) compared to 2021, this increase is in line with Police recorded crime nationally.

On a ward levels basis, the highest levels of reports were made in St Mary's (1,358, down 307 / 18.4%); Romans (830) and Winton (830, up 166). In the south of the district the highest levels of reports were made in Abbey Ward (501, down 31). Where considered on a per population basis, the trend showed that Downland (154.64 / 1,000), St Mary's (136.14 – down from 161.9), Romans (98.4), Abbey (92.62 – down from 113.8), showed the highest rates. Valley Park (18.18) showed the lowest proportionate rates.

1,548 reports had a 'flag' referencing a domestic incident, of which the largest proportion (858) were classed as 'violence without injury'. 95 reports included reference to a bladed weapon, the majority of which were included in the 'possession of a weapon' category. 223 crimes include a reference to hate, of which the majority were listed under 'violence without injury' or 'public order' offence categories. A total

of 197 incidents were recorded as 'Hate Crimes', (period 1/7/21 – 30/6/22) up from 14 in 2021/22. Of these 108 were classified as 'Race Hate' (up 3), 5 were related to faith or religion (down 1); 10 (+3) were linked to gender, plus 34 sexuality related (Unchanged). Reports of disability related hate crimes fell by 4 to 39.

Health services

There are several health service provider locations across the Borough where vulnerable adults receive services, including GP surgeries and pharmacies in towns and local centres. Andover town also includes specialist services such as:

- Inclusion, 51 Bridge Street, Andover SP10 1BG
- Andover Health Centre, Charlton Road, Andover SP10 3LD
- Andover MIND, Westbrook Close, South Street, Andover SP10 2BN
- Andover War Memorial Hospital, Charlton Road, Andover SP10 3LB.

Current/former premises

Currently licensed premises within Test Valley are as follows:

Licence holder	Premises address	Type of Licence
Done Brothers (Cash Betting) Limited	Betfred, 72 The Hundred, Romsey SO51 8BZ	Betting
Ladbrokes Betting and Gaming Limited	Ladbrokes, 7 High Street, Andover SP10 1LJ	Betting
Roadchef Limited	Roadchef Rownhams North, M27, Southampton SO16 8AP	Adult Gaming Centre
Done Brothers (Cash Betting) Limited	Betfred, 12 High Street, Andover SP10 1NX	Betting
Betting Shop Operations Limited	Jenningsbet, 34 High Street, Andover SP10 1NN	Betting
Ladbrokes Betting and Gaming Limited	Coral, 157 Weyhill Road, Andover SP10 3BH	Betting
Roadchef Limited	Roadchef Rownhams South, M27, Southampton SO16 8AP	Adult Gaming Centre

Since the introduction of the Gambling Act 2005 the district has seen initially an increase but then a reduction in the number of licensed premises. Formerly licensed premises are:

Licence holder	Premises address	Date licence surrendered
William Hill Organization Limited	William Hill, 6 The Broadway, Andover SP10 2JF	August 2014

ANNEX 2A

William Hill Organization Limited	William Hill, 71 High Street, Andover SP10 1LP	December 2019
Rank Group Gaming Division	Mecca Bingo Club, Junction Road, Andover SP10 3QT	August 2022
Ladbrokes Betting and Gaming Limited	Ladbrokes, 29/31A The Hundred, Romsey SO51 8GD	December 2022
Roadchef Limited	Roadchef Rownhams South, M27, Southampton SO16 8AP	March 2017
Jennings Racing (2006) Limited	Jennings Racing, 11 Bridge Street, Andover SP10 1BE	Relocated to 34 High Street, Andover May 2009
Roadchef Limited	Roadchef Rownhams South, M27, Southampton SO16 8AP	March 2017
Ladbrokes Betting and Gaming Limited	Ladbrokes, 16 Bridge Street, Andover SP10 1BH	September 2014
Gemaso Limited	74 High Street, Andover SP10 1NG	September 2019